

Winter 2018

D'Youville

D'Mentions



D'YOUVILLE'S
15th
PRESIDENT

D'Youville D'Mensions

D'YOUVILLE COLLEGE
320 Porter Avenue
Buffalo, New York 14201
www.dyc.edu
716.829.8000

EDITOR

Meg Rittling

For comments and suggestions,
contact the editor at 716.829.7808 or
dmensions@dyc.edu

LAYOUT & DESIGN

Cher Ravenell

CONTRIBUTORS

Lorrie A. Clemo, PhD
Kathleen M. Christy
Sister Nancy Kaczmarek, GNSH
Kevin Keenan
Colin Nekritz
Office of Institutional Advancement
Lukia Costello Photos
Bob Kirkham Photos
Michael Thomas Photos

*We recognize and are grateful to our
loyal donors. We know you would
want your donation to be used in a
way that most benefits the students
and D'Youville. Therefore, this will
be the last printed list of the Honor
Roll of Donors as it has become
cost prohibitive to print and the
college campus has become more
environmentally friendly. Next
year's Honor Roll of Donors will be
available online.*

OFFICE OF INSTITUTIONAL ADVANCEMENT

Vice President for Institutional Advancement
Kathleen M. Christy

Associate Vice President for Advancement Services
Aimee Pearson

Associate Vice President for Alumni Engagement and Planned Giving
Meg Rittling

Director of Annual Giving
Kelly Biehls

Director of Stewardship and Events
Molly Lennon

Donor Records
LeeAnn Petronsky

Associate Vice President for Grants and Professional Development
Molly Flynn

Director of Foundation Relations
William McKeever

Grants Specialist
Maggie Best

Program Coordinator for Professional Development
Erica Morley-Soto

Assistant to the Office of Grants and Professional Development
Elizabeth Fallon

Department Receptionist
Rhonda Beck

D'Youville College is an independent institution of higher education that offers baccalaureate and graduate programs to students of all faiths, cultures, and backgrounds.

D'Youville College honors its Catholic heritage and the spirit of Saint Marguerite d'Youville by providing academic, social, spiritual, and professional development in programs that emphasize leadership and service. D'Youville teaches students to contribute to the world community by leading compassionate, productive, and responsible lives.

CONTENTS

4	Message from the President
6	Mass of the Holy Spirit
8	The Purpose of Our Being
12	Inauguration Celebration
14	Campus News
20	The Haitian Project
22	Message from the Vice President for Institutional Advancement
24	Message from the Alumni President
22	Red, White & You: Reunion Weekend
30	Alumni Spotlight: Sister Donna Del Santo, SSJ '75
31	Alumni News & Events
32	Class Notes
34	Virtual Book Club
35	The Kavinsky Theatre Season
back cover:	Special Occasions & Dates

MESSAGE FROM THE PRESIDENT



Dear D'Youville Friends and Family,

We have begun 2018 with much excitement as our momentum builds for an ever bright, more robust future here at D'Youville College. This past year saw a near record for incoming students selecting D'Youville for its diverse portfolio of offerings, generous tuition assistance, and program outcomes that align with the careers of tomorrow.

Our spring graduation class is so large we'll be holding two commencement ceremonies, one for undergraduates and another for advanced degrees, to accommodate more family and friends to watch and celebrate as students receive diplomas on their momentous day.

We were excited and proud that D'Youville was recently ranked as the top private school in Western New York for income after graduation, proving the value and choice students make when investing in a D'Youville education.

As a college we cannot go it alone and therefore we have been creating rewarding partnerships with like-minded organizations. We have several new articulation agreements with Daemen and Houghton Colleges, combining our strengths to offer students joint degrees and academic pathways that help reduce costs and time to degree.

Our membership with the Buffalo Niagara Partnership serves us well through advocacy and business development across the region, and a new partnership with Buffalo Niagara Waterkeeper will offer our students an opportunity to leave the environment safer and healthier for the next generation. We are also excited about a new partnership with Leadership Buffalo that will provide leadership development and service learning opportunities not only for our students, but our employees and staff as well.

D'Youville is also looking to lead the way in healthcare education with an innovative, first of its kind, all-new 50,000 square foot training and education center called the Health Professions Hub, or "The Hub" for short.

The Hub represents D'Youville's continued investment in the students, community, and the region with a new teaching and care center on Buffalo's revitalized west side. Built to serve the community as a whole, The Hub will work to apprentice, train, and upskill the future workforce not only regionally, but as a model that can serve other communities across the state and nation.

Inside, patients, students and visitors will find a clinic, diagnostic center and pharmacy, all featuring our well-trained staff and students offering rehabilitation, physical therapy, chiropractic, as well as workforce training rooms, inter-professional simulations, and an amphitheater for professional development conferences and community events.

Our goal is to develop a community-based center that will attract and retain the next generation of healthcare workers, create job growth, maintain talent in the region, reduce the cost of healthcare through inter-professional practices by treating the whole person, and prevent illness and disease before they start.

Innovation of this scale will require the assistance of public and private grants, gifts, and essential charitable support. Each and every person who gives to The Hub project helps shape the future of healthcare and the well-being of our community. The Hub experience will come to life through like-minded visionaries who care to create healthier communities.

The Hub is an undertaking much the same as D'Youville College was when it was founded in 1908: a beacon of hope serving families from all walks of life and the community through education for the greater good. We're certain you can join us in finding ways to build a place of care and change for the healthcare of tomorrow.

Stay tuned for how you may help make the healthcare dreams of tomorrow become a reality today.

Best to you for a happy, healthy 2018.

A handwritten signature in dark ink that reads "Lorrie A. Clemo". The script is fluid and cursive, with the first letters of the first and last names being capitalized and prominent.

Lorrie A. Clemo, Ph.D.
President of D'Youville College



MASS OF THE HOLY SPIRIT *celebrates* INAUGURATION DAY

Holy Angels Church adjacent to the D'Youville College campus was the setting for the Mass of the Holy Spirit, marking the start of a day of festivities that culminated with the inauguration of Lorrie A. Clemo, Ph.D., as D'Youville's 15th president.

Most Reverend Richard J. Malone, Bishop of Buffalo, served as principal celebrant of the Mass and was joined by 15 religious order and diocesan priests.

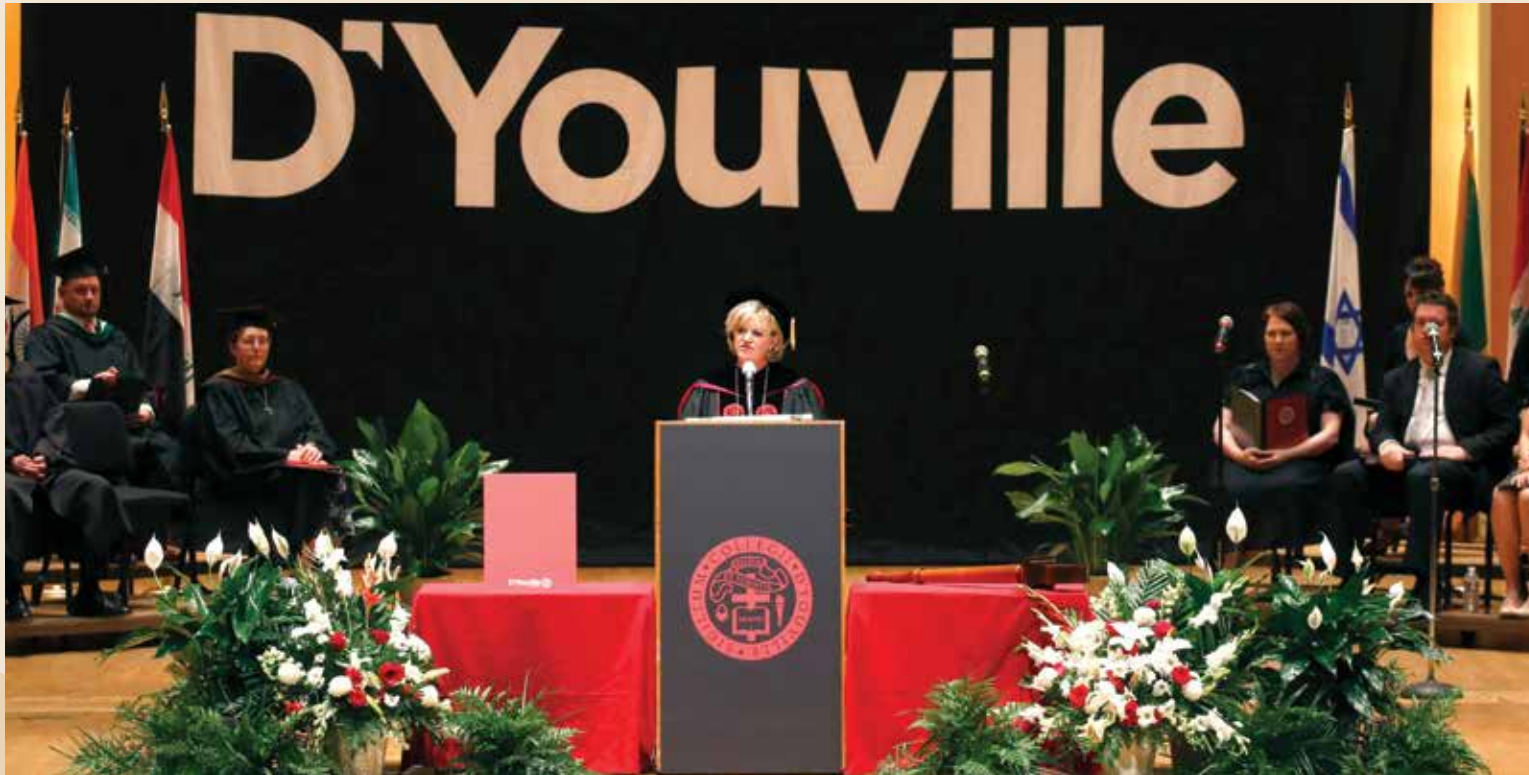
During his homily, Bishop Malone said, "A person who goes to heaven has lived a good and Godly life. That's the definition of a saint." He recalled the life of St. Marguerite d'Youville, who knew great suffering, through the death of her husband and four of her six young children.

"Her suffering, her faith in God's presence in her life, her confidence in God's compassionate love for everyone, led her to a lifelong commitment that spread to other women; a commitment to serve God and serve the poor, in particular."

"D'Youville is what it is today because her mission inspired the creation of this great college by the Grey Nuns."

Addressing President Clemo, Bishop Malone said, "Your role is like Marguerite's: to help people in the world of education with human formation in all that God has meant them to be."

The Mass of the Holy Spirit dates to the 16th century when Jesuit colleges used it to open the academic year, asking for God's guidance on all activities during the year.



THE PURPOSE OF OUR BEING

Lorrie A. Clemo, Ph.D. inaugurated 15th president of D'Youville College

President Clemo describes bold vision of innovation for the college's future

D'Youville College's new era began September 29, when Lorrie A. Clemo, Ph.D., was inaugurated the college's 15th president during a ceremony at Kleinhans Music Hall. President Clemo is the first lay president in the 108-year history of the college, and her inauguration was the first for the school in 38 years.

Leading off the processional were international students from 34 nations and representatives of the Student Government Association. *(See photo page 2-3)*

Among those taking part in the processional: Most Reverend Richard J. Malone, Bishop of Buffalo, the D'Youville College Board of Trustees, university vice presidents and deans, and delegates from more than three dozen colleges and universities. Three of President Clemo's four children, Dr. Charles Nicolais, Adam Nicolais and Dr. Maria Nicolais, also processed, representing their alma maters, Temple University, Fordham University and Bowdoin College, respectively.

Opening remarks were delivered by chief marshal and professor of liberal arts, Dr. G. John Abbarno. "It is more than nine months since Dr. Clemo joined the D'Youville community. In this brief time she has launched a vision with ideas that aim to enhance the talents of faculty and administrators to improve the educational experience of our students. She is committed to their education for life that will be innovative, liberating and precise. It will serve as the foundation of all their aspirations.

"Dr. Clemo will build from the achievements provided by the rich history of the college, but aims to transform and extend the college's impact beyond the city boundaries with programs that engage in global issues. Although she has taken different vows than her religious predecessors she is committed to the principle of service but envisions new ways this may be realized."

In his opening prayer and remarks, Bishop Malone said the diocese joyfully welcomes her, "Thank you, President Clemo, for your commitment to D'Youville's mission. Thank you for honoring its Catholic heritage in the spirit of St. Marguerite d'Youville and the Grey Nuns, whose faith and dedication brought the college into being and nurtured it along the way. Thank you for your generous commitment to strengthen and support the school's programs and platforms, but most especially its people, the students, faculty, staff and alumni who make D'Youville College the vibrant institution that it is. May your tenure here be filled with personal and professional fulfillment, joy and prosperity."

The installation was conducted by Charles J. Urlaub, chairman of D'Youville's Board of Trustees.

He called it a "landmark event in the life of the college that we hold dear and value so highly. Lorrie's candor and forthright manner are hallmarks of her character, leadership and expectations.

"D'Youville was founded by impressive women, the Grey Nuns, who had visions of great accomplishments for



The colors were posted by D'Youville College's Student Veterans Association Military Color Guard.

Buffalo and for college-bound students. President Clemo is committed to a great vision, a superior vision for the 21st century. She has spent her entire career working for higher education in New York State. She sees D'Youville pushing the boundaries, reaching new summits, reaching levels of accomplishment we have never achieved or attempted. She sees our campus as diverse and inclusive, full of promising self-starters, and most importantly, driven toward student success."

During her inaugural address, "The Purpose of Our Being," President Clemo remembered her mother, Mary May Clemo, who never had the opportunity to go to college. "For over 40 years she served as an assistant to education administrators—ironically, people just like me. She was behind the scenes, but had an unmatched work ethic committing herself to a supporting role in the education of others, while making a happy life for my sisters and me."

She also talked about her father Charles, who at the age of 16 emigrated from Canada to the United States. He became a naturalized citizen, served in the U.S. Army as a medic during the Korean Conflict, then worked for 35 years in

the service industry. "I am proud of what he did for our family, our country, and what he did to instill character and love of life in me. And, through his example of good Canadian humor, he taught me to take myself a little less seriously."

President Clemo went on to describe her vision for the future of the college, which goes well beyond the West Side neighborhood where it has become and will continue to be an anchor. "Going forward, D'Youville will continue along its progressive path, lead change and innovation in higher education. We will embrace challenges as opportunities. Like St. Marguerite d'Youville and her relentless drive to heal the sick, we ask ourselves: What are the challenging needs of our time and how will we adapt to conquer these challenges?"

The answer is clear, she said, it is for D'Youville to galvanize its efforts to develop courageous leaders who care for the world; expand the power of D'Youville by building on its legacy, preparing students to live and work in a global community with global fluency and full engagement, and to expand opportunity with dedicated donors and trusted partners.

President Clemo reinforced D’Youville’s commitment to Buffalo, “by training our students to provide culturally-responsive health care, assisting with the integration of children and their families into school and college, and improving the cultural competence of all of our students, faculty and staff.”

She said the college will create additional community-based and international internships; more clinical placements; expand more study abroad and study away opportunities; enhance faculty resources in international relations, and support more community outreach.

“In short, D’Youville will ensure that every student’s experience is a global one, whether it’s here in our globally networked neighborhood or in a needy nation abroad,” she said.

Taking education to the people where they are, and where their needs are, will be a priority, she said, promising to expand 24/7 online learning and onsite at your workplace instruction. “We are prepared to cascade our well-respected name and signature academic programs far beyond our campus to reach increased numbers of students through partnerships and collaborations that will allow us to deliver relevant experiences and programs in settings that will serve as living laboratories for learning.”

Prior to her inauguration, President Clemo received several greetings:



On behalf of the Grey Nuns of the Sacred Heart, Sister Julia C. Lanigan, GNSH, president of the order, noted President Clemo is “the first president of D’Youville who is not a Grey Nun. We entrust to you the legacy of the Grey Nuns here at D’Youville. This rich legacy has brought the college through many years of extraordinary achievements. May the mission of St. Marguerite d’Youville, that inspires D’Youville College, flourish and grow under your capable leadership.”



On behalf of the City of Buffalo, Mayor Byron M. Brown said he was pleased at how the city and D’Youville collaborate: “I’m especially grateful for our shared commitment to diversity, inclusion and equity. D’Youville College students, faculty and staff serve this community in many ways, and our valuable partnership is something that we cherish. I am confident that Dr. Lorrie Clemo will expand this relationship even further, as the City of Buffalo also continues to grow and to thrive.”



On behalf of the student body, Christine Seibert ’17, ’20, president, Student Government Association said, “On this special day for all of us at D’Youville, I would like to share some words from a well-known, life-long student, Benjamin Franklin, who said: ‘Tell me and I forget, teach me and I may remember, involve me and I learn.’ President Clemo, I am so excited to have you join with us in striving towards this ideal.”



On behalf of faculty, Gina Camodeca, Ph.D., president, Faculty Council: “We join with you in wanting D’Youville to be a place where faculty always believe they can do their best work. This means surrounding them with outstanding colleagues, students, and staff, providing cutting-edge infrastructure, developing the resources to support innovative research and teaching, and last, but not least, celebrating their successes. Today we celebrate the college and your leadership, but most importantly, we celebrate the work we will do together going forward.”



On behalf of support staff, Lori A. Marasco, chair, Support Staff Advisory Group: “Each person who believes in what we do here, will be part of what we become here. Support staff are the backbone of the institution, the steady heartbeat and the helping hand in planning and execution. We embrace this exciting transition and look to the future with energy and excitement. Together, we see what can be accomplished together as one team.”



On behalf of administrative staff, Ryan Miller ’11, ’12, G’13, chair, Administrators Advisory Group: Agan Hasan Abedi, a famous banker and philanthropist once said, “The conventional definition of management is getting work done through people, but real management is developing people through work.” Dr. Clemo, we embrace your vision of the future of D’Youville and encouraging a workplace of respect and empowerment. We recognize that the role of our administrative group is to be responsible for meeting our organizational objectives. Our D’Youville students of today and tomorrow expect and deserve nothing less.”



On behalf of alumni, Dolores Gaeta Prezyna ’70, Ed.D., ’14, president, Alumni Association Board of Directors: “Just weeks ago, I began a term as president of the alumni board, and was grateful for an opportunity to meet our new president. A few things were immediately evident: President Clemo’s commitment to education, her willingness to seek, listen, and learn from the experiences of others, and her obvious delight in having joined the D’Youville community. Dr. Clemo understands and appreciates the affection alumni have for D’Youville, as well as the current and potential ways we contribute to the character and health of the college.”

Voicing gratitude for the invitation to serve D’Youville College, President Clemo said, ‘I am committed to giving it my all, but it is not a job for one; it is a job for many. We have a great deal to accomplish. The world is waiting for us. So, let’s go D’Youville, let’s get to work!’”



Earlier in the day, Most Reverend Richard J. Malone, Bishop of Buffalo, celebrated a Mass of the Holy Spirit in honor of President Clemo's inauguration. Following the Mass, a campus-wide luncheon was held. Students were given the day off from classes in honor of President Clemo's inauguration. On Saturday, September 30, the Inaugural Gala was held to cap off the two-day-long celebration.



D'Youville's two previous presidents, Sister Mary Charlotte Barton, GNSH, and Sister Denise Roche, GNSH, attended the day's events.



Above: D'Youville Trustees Dale McKim, Kathleen Lawley Best and Gretchen Fierle attend the Inaugural Gala

Left: President Clemo and her family

CAMPUS NEWS

New Hires and Faculty News



Mimi Harris Steadman, EdD, vice president for academic affairs will be responsible for advancing D’Youville’s educational planning, program evaluation, and supervision of academics for college programs.

Steadman joins D’Youville after serving as associate vice president for institutional effectiveness at Daemen College where she oversaw the library, academic grants & sponsored programs, and institutional research and assessment. Previous positions included directing Daemen’s Center for Excellence in Teaching & Learning where she delivered a comprehensive program of professional development for faculty and staff, student success, teaching, technology, and assessment.

Steadman earned her doctorate in higher education administration at the University of California, Berkeley, an MS from the University of Rhode Island in Kingston, and a BS from Cornell University in Ithaca.



Joggeshwar (Jogy) Das, vice president for institutional effectiveness and planning brings 30 years of experience in advancing institutions of higher education.

Most recently, he served as associate dean in the School of Education for the State University of New York at Oswego, helping the school achieve national recognition for teacher preparation programs improving upon college professional associations and national accreditation. At Oswego, Das made significant contributions to many aspects of college campus life including research, education, mentoring, advising, administration, and globalization, helping to lead through effective communication with faculty, staff, and administrators in order to create a culture of continuous improvement.

Prior to SUNY Oswego, Das spent 25 years at Ohio State University, serving in multiple positions including Assistant Director of Undergraduate Programs at the Fisher College of Business School, Director of Undergraduate and Graduate services, and Manager for Quality Data Reporting for the College of Education.

Das holds an ABD from Ohio State

in anthropology and has two master’s degrees, an MA in anthropology from Ohio State University and an MSc from the University of Delhi along with a BSc in anthropology from the University of Delhi.



Jeremiah Grabowski, PhD, dean of online learning comes to D’Youville after nearly six years at the University at Buffalo where he led the

coordination of programs for their School of Public Health and Health Professions. Before the University at Buffalo, Grabowski spent ten years at Trocaire College where he oversaw development, design, and deployment of educational and instructional design.

Grabowski holds a doctorate from University at Buffalo in Curriculum, Instruction, and the Science of Learning Graduate School and co-authored “The Gamification of Online Education: How and Why?”



Zachary Rhodes, director of graduate and adult admissions will be responsible for planning and executing a comprehensive recruitment plan for graduate,

professional, adult degree completion and advance certification degrees.

Rhodes previously worked within the field of admissions at SUNY Buffalo State with a focused recruitment

effort in the Western New York region. Prior to that, he worked at the Massachusetts College of Pharmacy and Health Sciences within their undergraduate admissions office.

Rhodes holds a bachelor of arts in business administration with a concentration in management from Mercyhurst University, as well as a master of arts in higher education administration from Stony Brook University.



Denise Harris, director of career services will provide strategic direction and focus for the office which includes monitoring local, regional and national employment

trends. Harris has over 14 years of experience working in higher education and is a member of WNYACCC, the Western New York Association of College Career Centers, NACE, the National Association of Colleges and Employers and NACADA, the National Academic Advising Association.

She earned her bachelor of science degree in communication from SUNY Fredonia, and her master of arts degree in college student personnel from Bowling Green State University.

Beth Metz, director of human resources joins D’Youville after serving as the director of human resources at General Physician, P.C.

since 2014. She managed her own HR consulting practice providing guidance in human resource management policies, procedures and programs to a variety of clients. Metz specializes in complex, rapid-growth and turnaround organizations by successfully managing daily HR functions and building effective relationships in transition environments.

She earned a bachelor of science degree in business management at Medaille College and holds two human resources certifications. Her certifications include a Society for Human Resources Management (SHRM) – Certified Professional certification and a Professional in Human Resources certification through the Human Resources Certification Institute. She is also a board member of the Buffalo Chapter of SHRM (Buffalo Niagara Human Resources Association).

D’Youville Faculty Win 2017 Critics’ Choice Book Award



Book Award winner by the American Educational Studies Association (AESA). *Teacher Performance Assessment & Accountability Reforms: The Impacts of edTPA on Teaching and Schools* provides different perspectives on the edTPA

(Educational Teacher Performance Assessment), one of several state assessments required for classroom teacher certification, within the context of current education reform agendas.

The book is co-edited by **Dr. Julie Carter**, an associate professor and director of Teaching English to Speakers of Other Languages (TESOL) programs, and **Dr. Hilary Lochte**, chair of the education department. The book includes a chapter authored by **Dr. James Lalley**. Lalley, an assistant professor in the education department, used psychometric methods to explore the reliability and validity of the edTPA.

Established in 1968, AESA is an international society for students, educators, research scholars, and administrators who have an interest in the foundations of education. The association members dedicate themselves to exploring issues in education from a plurality of academic viewpoints and perspectives.

Denise Dunford Earns National Emergency Nurse Certification

D’Youville associate professor **Denise Dunford, DNS, FNP-BC, ENP-BC, APRN**, is the first nurse practitioner from UBMD Emergency Medicine and



the first in the D’Youville faculty to earn national certification as an Emergency Nurse Practitioner (ENP), a rare achievement of being dually board certified. Only 120 nurse practitioners nationwide have earned the credential to date. Denise is a 25-year member of the Western New York Chapter of the Emergency Nurses Association.

“Denise is an outstanding caregiver,” said Robert F. McCormack, MD, Chief of Emergency Medicine at Kaleida Health. “She seeks out the disenfranchised elderly patients in the emergency department and addresses all of their medical and social needs. She uses her experience and wisdom to help the neediest patients on a daily basis. She is a true advocate for those who need one most.”

Dunford is one of the first local family nurse practitioners employed in the emergency setting to focus on the elderly patient, a true role model for appropriate methods of treating our geriatric population on an individual and community level.

In addition to being an associate professor at D’Youville, Dunford is also director of the family nurse practitioner and doctor of nursing practice programs. Clinically, she maintains an active practice in the Department of Emergency Medicine at Buffalo General Hospital.

Dunford has been at Buffalo General Medical Center for 38 years, and since 1995 she has worked as a family nurse practitioner. Dunford has also been named the winner of the National Emergency Nurse Association (ENA) Award for Nursing Competence in Aging.



D’Youville was honored to have Western New York businessman and philanthropist Roger Hungerford visit campus on October 2. Mr. Hungerford, a long-time supporter of the college, was a guest lecturer and gave a presentation to students focusing on their career paths and the importance of education. During a luncheon given in his honor, he was joined by several Say Yes to Education graduates who are current D’Youville nursing students. It was a rewarding opportunity for the students to meet a founding supporter of the Say Yes to Education initiative, a program that has helped them achieve success with their education and future careers. D’Youville was delighted to welcome him to the campus.



Riverrun Recipient

Senior Kristen McMurtree is D’Youville’s 2017 winner of the Riverrun Award, a \$2,000 scholarship awarded to a humanities major. McMurtree has completed a degree in exercise and sports science and

is currently completing a degree in religious studies and a minor in dietetics.

Her academic advisor, Dr. Walter Sisto, says, “She is a devout Christian who is committed to incorporating her faith in Christ into her career. She is a hard worker and overall an amazing young lady.” What is unusual about McMurtree is that she is a championship boxer.

In high school, she ran track, but bullying by teammates and other students made it too difficult for her to continue. The first time she punched a boxing bag, she realized that boxing was what she wanted to do. Since then, she has risen rapidly in the women’s boxing ranks. In 2015, she won the Women’s National Golden Glove championship in Fort Lauderdale, Fla., by a knockout.

McMurtree continues to compete nationally. In October, she was on her

way to a win at the USA qualifiers in Chattanooga, Tenn., when her nose got broken and she ended up losing. She thought that her chances of fighting in the national championships this year were over, but she was awarded one of two wild cards.

Because of the wild card, McMurtree is one of eight women nationally who qualify for the USA Boxing Elite National Championships in Salt Lake City, Utah, in December. At her current level, she relies on donations and her own funding for training and travel. If she earns a place on Team USA, she will travel with the team to matches all over the world and be funded by USA Boxing.

Boxing led to other things. She stars in the Goo Goo Dolls’ music video So Alive. “The song is basically about someone fighting their alter ego. I am playing the role of an edgy female boxer. It’s amazing,” Kristen said. The video can be seen on YouTube and is set in the Buffalo Central Terminal.

McMurtree also gives anti-bullying talks in schools. She is a personal trainer and runs UB Boxing, which is open to any boxers. She also coaches the University of Buffalo boxing team. She acknowledges that it sounds as though she’s unusually busy, but says, “I’ll keep being my crazy self.”

The Riverrun Award was started in 2015 to award scholarships to outstanding liberal-arts majors at several Western New York institutions, including D’Youville. Riverrun “recognizes the special value of liberal arts education in fostering full and self-aware lives and healthy communities.”



Karen Eckert, Michael’s wife, holding a picture of Josephine (left) and Valerie (right), Michael Procknal (nephew), Christine Procknal (niece), President, Lorrie Clemo and Dr. Steve Smith, director of undergraduate admissions.

D’Youville College Receives over \$160,000 for Student Scholarships in the Sciences

On September 15 the Procknal and Eckert families presented to D’Youville a donation of \$160,225 to be used for student scholarships. The generous donation to the college is a result of a gift made by the estate of Valerie Potrafke in honor of her sister, Josephine A. Procknal, who preceded her in death.

Josephine A. Procknal ’44, majored in biology and spent several years in the pharmaceutical industry before joining the University at Buffalo faculty in 1969, first as a senior technician and later as an instructor of pharmaceuticals.

Procknal was very involved during her time at D’Youville in activities and general student organizations. She was treasurer and later president of her class, worked on the staff of the D’Youvillian, and was a regional delegate to the National Federation of Catholic College Students.

Valarie Potrafke was so grateful for the scholarships Josephine received while attending D’Youville that she requested \$160,225 to be used to establish a scholarship for incoming students in pharmacy or biology for up to eight semesters or the fulfillment of their bachelor’s degree.

D’Youville’s School of Pharmacy is recognized for excellence in education and service due to its faculty and students improving the profession and the health of their community through collaborative practice and research.



D'Youville Receives \$100,000 State Grant Secured by Senator Tim Kennedy '99

President Lorrie Clemo was joined Thursday, October 5, by Senator Tim Kennedy (D-Buffalo) to announce that the college has received a \$100,000 state grant secured by Kennedy. The grant will support the \$470,000 renovation of four floors of the college's Marguerite Hall, first constructed in 1966.

The project consists of the renovation of two full floors of student residences, totaling 28 rooms, as well as two floors of student lounges, totaling four rooms. Additionally, four floors of restroom facilities, eight in total, will be modernized. This work includes demolition, drywall, painting, cabinetry, carpeting, tile repair and replacement, plumbing, and new lighting.

President Clemo said, "Funding announced today will provide much needed state-of-the-art technology and design features that will promote socialization in a comfortable living space; updating the residence to the standards expected by today's students. It is important that students feel at home here at D'Youville, not just in the classroom but also here where they live. This funding will help us to provide that."

"As a proud D'Youville alumnus, I know firsthand how important this school is to our community," said Senator Kennedy. "When the opportunity came up to help support a school that is training so many of the young professionals that our region relies on, I jumped at the chance. These renovations will ensure that the next generation of D'Youville graduates can enjoy the modern amenities they need to complete their studies. Congratulations to D'Youville as they move forward on this project, and I look forward to continuing to work with them as they lead the way in educating our future workforce."

"This investment is going to ensure that students who come in from out of town, from out of state, and from out of the country, get the wonderful education D'Youville has to offer, to have a place to call their home, to have the most technologically advanced apartments and residences here at D'Youville College, a place the students are deserving of."

First Niagara Bank Foundation has made its second grant to D'Youville with an award of \$15,600

The First Niagara Bank Foundation has made its second grant to D'Youville College to continue the Free Application for Student Financial Aid completion program (FASFA) as part of D'Youville's pre-collegiate program with an award of \$15,600. The project works with Buffalo neighborhoods to assist low-income and first generation college student families to complete the application for student financial aid and to help navigate the college application process and qualify for the maximum amount of financial aid.

The Community Foundation for Greater Buffalo, through its Perry Memorial Fund, awards D'Youville College two grants.

The first award provides \$47,500 to The Kavinoky Theatre to install new technology in the form of floor-to-ceiling LED curtains which can provide closed-captioning during productions, display digital backgrounds as part of set design, and provide audience messaging services and sponsor recognitions.

The second grant award of \$20,000 provides startup funding for the School of Pharmacy's mock pharmacy laboratory /direct veterans health management services project. The college will build a mock retail pharmacy on campus for experiential learning for pharmacy students and will also use the realistic setting to provide real-life medication counseling to veteran students enrolled at the college and eventually from the community.

The J. Warren Perry and Charles Donald Perry Memorial Fund was established at the Community Foundation for Greater Buffalo by the Perry Brothers in the early 2000s to provide startup funding for innovative and sustainable projects to better the Buffalo community.

Patrick P. Lee Foundation

D'Youville received a one-year grant from the Patrick P. Lee Foundation in the amount of \$51,161 for the "Lee Foundation Mental Health Professional Development Initiative". With the Lee Foundation's generous support, D'Youville will provide multiple professional development training opportunities on a range of mental health topics, including current best practices as well as emerging trends. The trainings will be designed with input from the area's mental health workforce and allow practitioners to upgrade their professional competencies, acquire new skills, and ultimately, to better meet the mental health needs of our community. Events will begin in early 2018.

Please contact Ericka Morley-Soto, program coordinator, at 716.829.7802 or sotoe@dyc.edu for additional information on upcoming trainings and visit our webpage, www.dyc.edu/PD.

A Service for Students

If you visit the offices of D'Youville's Campus Ministry, you'll see metal shelving stocked with nonperishable food and personal products. Curious about the story behind this? You've discovered Campus Cupboard, a service for students who are going hungry in order to pay their other expenses.

Campus Cupboard was started in 2016 in response to the increasing awareness that D'Youville was part of that national trend. D'Youville students who don't have the money to pay for non-perishable food and personal care items can now get them for free at the Campus Cupboard. Anyone who needs help is welcome to take what is needed, no questions asked, no application required. If someone knows of a student who needs help but is reluctant to come in, all they need to do is contact Campus Ministry and help will be provided discreetly.

Still wondering if this is needed at D'Youville? Just look at the results. From April 2016 to May 2017, Campus Cupboard assisted over 450 students with items like cereal, pasta sauce, protein bars, peanut butter, toothpaste, and soap.

The D'Youville community is mindful of replenishing the Campus Cupboard. At the August college assembly meeting, all faculty and administrators were invited to bring contributions. The Student Dietetics Association sponsored a drive in October, placing donation bins in heavily trafficked locations, and the dietetics students assembled 21 "to go" meals.

Assistance is always needed and you are asked to join in the college community in providing much-needed items to students.

Donations of money and non-perishables can be made to the Campus Ministry Office KAB 121; 716.829.7672 or by email at CampusMinistry@dyc.edu.



KeyBank awards \$10,000 in Scholarships

Ron Sutton, regional trust manager and senior vice president of KeyBank presents a \$10,000 check to scholarship recipients: Kayla Gardner '19, Samantha Cohen '19 and Jonvier Whittington '17. Not present is Aweeso Noor '18

THE HAITIAN PROJECT

Left to right: Dr. Sarah Pictor, Wilfrid Macena, President Lorrie Clemons, and Cedieu Fortilus



reception helped attendees see where their donations go and showed Fortilus and Macena the faces of those who are eager to help them.

Proceeds from the reception are going directly to projects such as treatment, procedures, and specialized equipment. It is difficult for Americans, particularly students, to travel to Haiti safely, so D'Youville's involvement focuses on training, long-distance consultation, and fundraising rather than direct service.

The reception was designed to increase awareness of the Haiti Rehab Project, particularly one aspect of it, called the Haiti 500. This targets donations of \$500, which go further in Haiti than they would in the United States. For example, \$500 will provide a year of therapy for a child with disabilities or send a child of a disabled adult to school for a year.



D'Youville is an official partner of the project. Donations may be made through the link on the website (haitirehabproject.org). A check made out to Haiti Rehab Project can also be sent to Dr. Sarah Pictor at D'Youville. Funds are guaranteed to reach the needy that they are intended for, since they are taken securely to Haiti by the project's founder.



As part of D'Youville's ongoing partnership with the Haiti Rehab Project, which supports rehabilitation clinics in Haiti, a fundraising reception was held in the college's Blue Lounge on October 13. It featured visitors from Haiti as well as refreshments and a basket raffle. The guests of honor, Haitian rehabilitation specialists Cedieu Fortilus and Wilfrid Macena, are the contacts and lead workers of the Project in Haiti. They started their involvement in rehabilitation after the 2010 earthquake, which injured thousands of Haitians. Although they were untrained, they provided rehabilitation

and homemade prosthetics to the injured. Now they are training others and learning new techniques in collaboration with the Haiti Rehab Project.

The reception took place during the two weeks that Fortilus and Macena spent at D'Youville in October. They received ongoing training in working with technology, using library databases to find information, and practicing with the latest rehabilitation equipment. The two returned to Haiti with fully equipped laptops that will let them connect with experts at D'Youville for real-time patient consultations. Their presence at the



CAPITAL CAMPAIGN CELEBRATION: A \$21 MILLION SUCCESS



THANK YOU TO THE ALUMNI AND FRIENDS WHO INVESTED THEIR FAITH AND PHILANTHROPY IN THE COLLEGE FOR THE BEST FUNDRAISING YEAR IN D'YOUVILLE HISTORY!

D'Youville is the kind of extraordinary institution where the financial investment of alumni, Trustees, faculty, staff and friends is an essential element of our current and future student's success.

Since the launch of the capital campaign in November 2013, so many D'Youville supporters have shown an unwavering commitment to D'Youville College. The belief that we could achieve our goal in this transformational and essential campaign and now have a brand new 85,000 square foot state of the art academic space for students (The Dr. Charles and Mary Schweitzer Bauer School of Arts, Sciences and Education), the first outdoor sports facility in the College's history (Dobson Field) and the college endowment increased by over \$10 million. The increased endowment translates in increased scholarship aid for students, greatly enhancing the college's efforts to support access and be affordable for our current and future students.

Those who have benefited from a D'Youville education understand that the in-depth and well-rounded experiences are more expensive than tuition alone can cover and such an incredibly valuable part of a D'Youville education. Charitable support makes it possible for D'Youville students to study with top-notch

scholars in small groups; study and live among a diverse group of dedicated peers; engage in meaningful research, internships, inter-professional training, international study and other experiential learning opportunities.

Yesterday, today and tomorrow, D'Youville's culture values giving. Because of this culture, those who are or will be a part of D'Youville are better individually and belong to stronger, more meaningful communities.

In addition to those donors who have made our capital campaign success possible, we also salute our charitable partners who donate annually and make our Loyalty Fund and all other fundraising projects a success.

Those featured and acknowledged in this annual report represent the varied interests, passions, ways and means of giving that together make D'Youville great. Their passions for D'Youville, like yours, lie in personal experiences with this extraordinary college, in relationships with professors and students; in memories made and talents discovered through internships, clinical placements, service trips and research projects; and in the hopes and dreams for future generations of students.

Giving to higher education must be valued, protected and encouraged. When we give, we are gaining something truly priceless. May these examples of support stir your own memories and passions for D'Youville and inspire your involvement to preserve and improve the college. As you have learned in this issue of *D'Mentions*, we have so many exciting things happening at D'Youville. We look forward to sharing these exciting new projects with you, and are excited to have you visit us on campus, and look for President Clemo and our alumni team visiting you. We look forward to growing our friendships with all of you, and having you be a crucial partner in D'Youville's future.

THANK YOU FOR EVERYTHING YOU SHARE TO HELP D'YOUVILLE SUCCEED!

Again, thank you for your continued generosity and support – please continue to give to our good work.

Wishes to you for a Happy and Healthy 2018!

A handwritten signature in dark ink, reading "Kathleen M. Christy". The signature is fluid and cursive, with a large, stylized "K" and "C".

Kathleen M. Christy
Vice President for Institutional Advancement

MESSAGE FROM THE ALUMNI PRESIDENT



Dolores Gaeta Prezyna, Ed.D. '70, '14

Earlier this fall several members of our Alumni Association Board of Directors and I had the pleasure of attending the D'Youville Spirit Day Carnival at Dobson Field. We set up our table with a variety of items for students to win as an enticement to visit our display. What a wonderful opportunity for us to get to know some of the students, talk to them about their career aspirations, and welcome them as future alums. This event served as an informal example of the alumni association's goals, to encourage alums to *come back* and *give back*. As alums that afternoon we were able to enjoy coming home again to D'Youville and feeling a part of our college, and at the same time provide a service to the students. These two purposes provide a glimpse into the Alumni Association's mission.

As volunteers at this event we thoroughly enjoyed meeting the students and being able to give them an article of D'Youville memorabilia to take with them. Hopefully our interactions also created for them a connection to their college alumni.

The Alumni Association is that connection and the Board of Directors represents the nearly 20,000 men and women from all 50 states and over 20 countries who are today's D'Youville's alumni. Our alumni are treasured as the most visible and positive examples of the college and its mission as each day they live the mission of "leading compassionate, productive, and responsible lives." The members of our Alumni Board are a group of caring and enthusiastic alumni who are dedicated to our college and have chosen to give back through their membership and active involvement. Together we hope to assist our alumni to stay connected, and to initiate opportunities for today's students to also stay connected as they transition from students to alumni.

Since its founding in 1908 as the first college in Western New York to offer baccalaureate degree programs for women, D'Youville has continued to be relevant to the society of which it is a part. When I graduated from D'Youville as an English major in 1970 the college was a small women's college known for its strong liberal

arts programs. When I returned to D'Youville as a doctoral student many years later I found a college rich in relevancy to our society by providing both undergraduate and graduate degrees in needed fields. Now a college offering 45 degree programs and grown to encompass 12 buildings, one thing has never wavered – the emphasis on leadership and service is still prominent in the college's mission.

This mission extends to our Alumni Association of which you are a part, and the goal of our Board of Directors is to help you stay connected with D'Youville and with each other. Whether you are a new alum or one who graduated in a past generation, there are so many ways you can get involved.

COME BACK

D'Youville is always a part of you and will always be your home. Celebrate the traditions that are D'Youville and nurture lifelong relationships by connecting with various generations of alumni and find out how many shared memories you have in common. Reminisce, network, and find out what's happening on campus.

Stay informed. Read *D'Mentions* and the monthly e-newsletter. Peruse the college website and all the information on the Alumni pages concerning upcoming events. If you haven't been back to the campus for an alumni event in a while, promise yourself that you'll attend one this year. We guarantee you'll find someone there with whom to share memories. If you live far from Buffalo, try to informally connect with other D'Youville graduates in your area. Be the one who starts the ball rolling for that get together, large or small.

Our Alumni Office can help you find alums in your area. Join our Board of Directors.

If you attended D'Youville as a graduate student, you may feel the strongest connection to those in your chosen field of study. Stay connected to this affinity group for networking, mentoring, and professional support. The Alumni Association can assist you in developing affinity group events that you would find worthwhile and enjoyable.

Use the services of the college. As new graduates navigate in their professions, alumni can often provide the support needed to succeed as well as the opportunities for making connections in your field through networking. This can happen through the connections you maintain with colleagues, by accessing the services of the Career Services Center, or by mentoring and facilitating introductions for new graduates or current students in your field.

Take advantage of the alumni benefits offered. Obtain an alumni ID card and access the resources of the Montante Family Library including online access as well as the college's fitness facilities. Receive discounts on insurance and discounted tickets to The Kavinoky Theatre. Attend an athletic event.

GIVE BACK

Give a gift of your time, talents, or treasure to assist current students. Experience the vibrancy of the campus by assisting the Alumni Board of Directors in supporting the needs of student groups. For example, the Campus Cupboard is a campus-wide effort to ensure that every student has access to vital non-perishable

food items and personal care items and is available to any student who has a need. This year members of the Board of Directors are bringing non-perishable items to each monthly meeting to contribute to the Campus Cupboard. All contributions are welcome. Our Board has also formed a Service Committee to research other ways to provide on-campus services to students as well as community service opportunities.

Assist D'Youville by recruiting future students, mentoring current students, facilitating introductions for new graduates in your field, offering internships at your place of employment, or participating in a networking event.

Sign up for the Amazon Smile program which contributes a percentage of each of your purchases on Amazon to D'Youville. You sign up once and contribute each time you shop.

You are D'Youville's Alumni Association and will always be a part of D'Youville. We hope you will stay connected through the Alumni Association and its events and opportunities. Please keep in touch and let us know how your Alumni Association can better serve you. It's an exciting time to be involved.

Best wishes,

RED, WHITE *and* YOU

REUNION WEEKEND
SEPTEMBER 29 - OCTOBER 1



Classes ending in 2 and 7 celebrated milestone anniversaries during Reunion weekend. A number of alumni descended on campus not only to become reacquainted with classmates but to explore all the changes to the campus.

On Friday, student ambassadors led alumni on campus tours which included some old favorites - Madonna Hall and the dorms in Marguerite Hall. Later that evening, over 30 alumni attended a private reception in the Boethia Room before attending a sold out production of *The Producers* at The Kavinoky Theatre.

On Saturday, alumni explored Buffalo by taking a downtown walking tour where they saw signature works by some of America's greatest architects and learned about the prominence of the city at the turn of the twentieth century. In the afternoon, alumni took a trolley ride throughout Forest Lawn Cemetery. They learned about the history, including the rural cemetery movement, art and architecture, trees, waterways and wildlife and, most importantly, the many residents.

Alumni returned to campus on Saturday night for cocktails and dinner in the College Center Blue Lounge while listening to music from the Mark Mazur trio. The weekend closed with Mass in the Sacred Heart Chapel followed by a champagne brunch in Madonna Lounge. President Lorrie A. Clemo gave a presentation about her first 100 days and her vision for the college.

Congratulations to all classes that celebrated their special anniversary.



CLASS OF 1967



Left:
Lorna McPatter

Clare Cosgrove Andrews, Ann Keane Baden, Maureen Carroll Bender, Jane Bigelow, Angela Scime Bizek, Carolyn Peters Bongi, Carol Wydysh Brooks, Kathleen Barbera Coughlin, Kathleen Daley, Patricia Pantera Di Sessa, Chris Barth Eberl, Mary Sierk Freeman, Eileen Maher Gannon, Catherine Gates, Jeanne Glair, Marie Donovan Humphreys, Diane Kaczmarek, Sonia Gembalski Kelly, Betsy Schmit Kooshoian, Kathleen Kreis, Theresa Cosgrove Laslo, Joanne Tourjie Meyer, Louise Kostrzewski Mruk, Christine Collins Pattantyus, MaryEllen Merrick Reilly, Jeanne Turowski Rogness, Sheila Duggan Rosenecker, Lorraine Drzymata Rybak, Lu Ann Scalisi, Catherine Powers Schwalenstocker, Louise Seereiter, Carol Scharmach Shisler, Maureen Vaughan Straight, Sandra Petti Tomasulo, Catherine Hawthorne Topley, Mary McMahon Wartko, Margaret Wright Weinholtz, Marilyn Guthrie Welt, Barbara Kanski Wier, Mary Kittle Williams, Elaine Zax Wood and Shirley Gerwitz Zahm



Seated left to right: Ruta Gailitis Pundurs and Judy Garbacz Lopez del Moral;
Standing left to right: Connie Musial Weise, Mary McMahon Wartko, Zdenka Gredel-Manuele, Lucille Gervase and Elizabeth Seereiter Hogan



Left to right: Elaine Zax Wood '67,
Jane Bigelow '67 and Carol Wydysh Brooks '67



The class of 1957 gathered for lunch at the Buffalo Yacht Club:
Seated left to right: Winifred Conway, Leona Reed Gonzales, Marilyn Turner Panzica, Sally Kreuzer Stefanick and Kathleen Quinlan; *Standing left to right:* Marcia Rolleck Rutowski, Joan Young Heine, Sandra Manta Talluto, Mary Ann Sharrow, Josephine Barrile Friend, Halina Kakik Biddle, Marlene Nowicki Kotlowski, Diana Zywicki Koscinski, Jean Alberti, Patricia Kilroy Molnar and Jean McGarry; *Photo shy* Dolores Rinaldo Gazzo and Kathryn Parsons Benfanti



LEFT: Patricia Pantera Di Sessa '67 and husband Thomas Di Sessa

LEFT BELOW: Left to right: Claudina Ghianni-Toole and Helen Bodkin Zuelzer

RIGHT BELOW: Left to right: Lorna McPhatter '02, and friend, Sonia Malcolm are pictured with Mary McMahon Wartko '62 and Constance Musial Weise '62



ABOVE: Front left to right: Danielle Rispoli Dolan and Stephanie Simmons Page; Back left to right: Julie Viele-Guidry and Colleen Fiedyn Varney

BELOW: President Lorrie Clemo presenting at the brunch



ALUMNI SPOTLIGHT

Sister Donna Del Santo SSJ '75



Front, left to right: Michaela McMahon, Stephanie Roseman, Samantha Cohen and Najwa Hassan; Back, left to right: Dr. Sandra Englert, Dr. Judy Lewis, Sister Donna Del Santo, SSJ, Dr. Christine Verni, Claudette Serugendo, Chinasa Martins, Kalkidan Ayalew and President, Lorrie Clemo; Missing Andrew Smith

D'Youville President Lorrie Clemo and Judy Lewis, dean of the School of Nursing welcomed Sister Donna Del Santo to campus on September 15 to meet recipients of the Del Santo Family Community Health Scholarship. Sandra Englert and Christine Verni, professors from the School of Nursing also attended.

The scholarship, supporting nursing students in their junior or senior year who demonstrate a commitment to community service and are pursuing a career in community health, was established earlier this year by anonymous donors in honor of both Sister Donna and her late sister, Diane Del Santo.

Eight students were chosen through an application process to receive the award at the beginning of the school year.

"With this scholarship, I will be able to focus more on my education

and helping the community," said D'Youville nursing student Michaela McMahon, '20.

The Del Santos have a long history with D'Youville, both as stewards and as students of the college. Sister Donna, '75, received a degree from D'Youville's School of Nursing, and Diane '82, received a degree from D'Youville's School of Education.

Sister Donna began her nursing career in the mountains of Eastern Kentucky, where she lived among—and served—the rural poor. In 1978, she joined Volunteers in Service to America (VISTA) and began working with Hispanic pregnant teens in rural Texas. In 1980, Sister Donna moved to Rochester, N.Y., as a recruiter for VISTA and the Peace Corps, and helped open and direct the Corpus Christi Center for 11 years. The center served the uninsured working poor

through volunteer health care providers. Currently, Sister Donna is a nurse for the Sisters of Saint Joseph and for the Monroe County Jail, the coordinator for a homeless shelter in Rochester, and a volunteer at the Bethany House, a Catholic house of hospitality.

Earlier this year, Sister Donna received the Delta Sigma Award from the D'Youville Alumni Association for improving the quality of life of others through service. Diane was the recipient of this award in 2010 and had worked as a Buffalo Public School teacher until her death in January 2016.

Sister believes she has lived a full and blessed life and lives by the words of Pope Francis, "We must restore hope to young people, help the old, be open to the future, spread love. Be poor among the poor. We need to include the excluded and preach peace."

Luncheon for Rochester Alumni

President Lorrie A. Clemo and the Office of Alumni Engagement hosted a luncheon for Rochester alumni on October 19 at Locust Hill Country Club. Approximately 30 alumni listened as President Clemo talked about her first 100 days, enrollment, programs, and local and global partnerships.



An Unexpected Gift

Ruth J. Schwendler never went to college, nor did she have a known connection with D'Youville—no relatives who attended, no history of donations. So it was a surprise to everybody, including her friends, when she left D'Youville a bequest for scholarships for students who, in her words, "would be judged otherwise unable to afford the cost."

Schwendler was an only child who worked all her life as a secretary and bookkeeper. Unmarried and childless, she lived quietly and simply in the home her parents bought in the 1950s. She did not travel or spend more money than she thought was necessary. She believed in U.S. Savings Bonds, which she started purchasing during World War II and held for as long as they earned interest.

Through this simple life, she saved and left behind a substantial legacy. Her friend and executor, Dolores Hufnagel, is "so pleased that she left her money to such worthy causes."

She enjoyed gardening and playing bridge with a regular group of friends, including Anne O'Connor '55 and Mary Schweitzer Bauer '47. Although some members of the group were D'Youville graduates, Hufnagel doubted that D'Youville was ever discussed, except in passing. "It wasn't that kind of bridge club," she said. "They came, they played cards, and they went home."

After Schwendler's death in May, 2016 at 92, it was revealed that friends and charities had inherited more than \$2 million dollars, including the bequest to D'Youville.

Kathleen M. Christy, vice president of institutional advancement, said, "The great generosity of Ruth Schwendler will do much to help us accomplish our goal to continue to make college affordable for as many students as possible. D'Youville students who will be helped by this gift will be tremendous stewards of Miss Schwendler's belief in education for all."

Marie Gerace Zafron '55 says of her friend, "Through her cousin, Dr. Francis J. Walter (a Canisius College professor of history), she learned the value of a college education. Through her friends, she came to know D'Youville College and its heritage."

The endowed scholarship is named in her memory and, at her request that of her parents, Henry and Clara.

ALUMNI NEWS & EVENTS

60s

Barbara J. Campagna '63 has been elected to the Hickory Hill Condominium Association board of managers. She has also been named chairperson of the Bistro Bookers Board. Bistro Bookers is a unique book club that is open to the public. Books are reviewed by someone knowledgeable of the subject matter. Many reviewers have been D'Youville faculty.

70s

Fern Jackson Beavers '72 mental health practitioner has been elected to the Board of Commissioners for the Commission on Collegiate Nursing (CCNE). CCNE evaluates and makes judgments about the quality of baccalaureate and graduate programs in nursing colleges and universities located across the country.

80s

Ellen Miller Colan '85 was named senior clinical advisor of perioperative services at Kenmore Mercy Hospital. She will coordinate and evaluate in-service orientation and continuing education programs for professional nursing personnel and is responsible for implementation of staff development training programs.

Laurie Lovejoy McNichol '81 has been named a 2017 American Nurses Credentialing Center National Magnet Nurse of the Year.

90s

Patrick Green '91 owner of Chautauqua Physical & Occupational Therapy has opened a second office in Mayville, NY. Green received a bachelor's and master's degree in rehabilitation and physical therapy. He received his doctorate in physical therapy from Utica College. The practice offers physical and occupational therapy and early intervention services for families with special-needs infants and toddlers with developmental delays.

2000s

Dave Ehrle '02 has been named principal of South Buffalo Charter School. Previously, Ehrle served in administrative and teaching roles at Global Concepts Charter School in Lackawanna. He attended D'Youville for his master's degree in elementary education and Buffalo State for his educational leadership certificate.

Francis Leli '06 and his wife, Susan celebrated their 50th wedding anniversary with the renewal of their vows at St. Andrews Church in Sloan, NY on July 22. Leli received his master's degree in adolescence education. Congratulations!



John Kane '10 has been named Senior Vice President of Quality & Patient Safety for Catholic Health. He will continue to oversee Catholic Health's Quality & Patient Safety Department and has assumed additional responsibility for the system's Clinical Operational Effectiveness Team. Kane received his master's degree in health services administration.

Janell Dutchess '16 has been hired by Pinkney Hugo Group of Syracuse as a digital media strategist. Dutchess earned a master of business administration degree in marketing.

Grace Schnitter '16 and James Nesper were married on September 9, 2017. Grace is employed as a nurse practitioner at Dent Tower and James is a CPA with Pricewaterhouse Coopers LLP. Congratulations!



In Memoriam

Shirley Heary Johnston '48
Hopewell, N.J.
March 3, 2017

Sister Anne Marie Gastle, GNSH '50
Meadowbrook, Pa.
September 22, 2017

Hildegard Loerch Kurtzhals '50
Littleton, Colo.
April 17, 2017

Margaret Glaser Snider '50
Grand Island, N.Y.
April 17, 2017

Miriam "Mimi" White Martin '51
Sarasota, Fla.
July 7, 2017

Rosemarie Mazurowski Bernick '54
Bethlehem, Pa.
August 13, 2017

Janet Armitage Sanders '54
Rochester, N.Y.
July 1, 2017

Mary Jane Trainor Myers '57
Lancaster, N.Y.
May 24, 2017

Sr. Elizabeth Bagen, GNSH '58
Huntingdon Valley, Pa.
September 1, 2017

Sr. Barbara Sipple, OSF '63
Allegheny, N.Y.
September 6, 2017

Mary Ann Glanowski Lisinski '64
N. Tonawanda, N.Y.
July 15, 2017

Laetitia Cullen Bourke '66
Orchard Park, N.Y.
April 1, 2017

Karen Lally Koziol '69
Rochester, N.Y.
July 19, 2017

Jean Woodward Roeder '69
Sarasota, Fla.
October 4, 2017

Mary Bower Thoen '70
W. Seneca, N.Y.
June 11, 2017

Pamela Harrington Schmid '75
W. Seneca, N.Y.
August 4, 2017

Judy Beecher '77
Buffalo, N.Y.
October 26, 2017

Rebecca Johnson Pietrzkowski '78
Tonawanda, N.Y.
June 2, 2017

Camille Serowski Kwiatkowski '87
Martinez, Ga.
August 25, 2017

Lilly Lococo '87
Buffalo, N.Y.
February 22, 2017

Cynthia Latke '88
Colorado Springs, Colo.
July 17, 2017

Joseph Foucha '91
Wildwood, Fla.
August 1, 2017

Rosemary Soluri '93
Niagara Falls, N.Y.
September 8, 2017

Donald Aucoin '95
Oshawa, Ontario
October 2, 2017

Mandeep Singh '03
Vinemont, Ontario
August 13, 2017

Condolences

Grace Kilbert Schneider '48 on the loss of her husband, Rudolph Schneider

Mary Crowley Carosella '52 on the death of her sister Agnes Crowley '54

Mary Ingrasci Demunda '53 on the passing of her husband, Thomas Demunda

Dolores Rinaldo Gazzo '57 on the death of her nephew, Leonard Rinaldo

Melissa Gray Crystal '64 on the loss of her husband, David Crystal

Carol Scharmach Shisler '67 on the loss of her husband, Howard Shisler

Dolores Gaeta Prezyna '70, '14 on the death of her sister Betty Ahl

Eileen O'Brien-Cardona '71 on the passing of her father, John Patrick O'Brien


Sheila Harrity Starkey '72 on the loss of her husband, Patrick Starkey

Sarah Marino '16 on the death of her father, Phil Marino; son of Adele Depasquale Marino '51

Dr. Megan Whalen on the death of her mother-in-law, Darlene Baranski Whelan

Rev. Jan Mahle on the death of her mother, Edith Leonard

Cheryl Saramak on the passing of her sister, Vicki Ann Keller



Announcing the Launch of the D'Youville Alumni Virtual Book Club

We're excited to announce the launch of a virtual book club for D'Youville Alumni (friends are welcome too). The group will be an online community where you can connect with each other and enjoy fascinating books related to lifelong learning, social issues, business, psychology and more. Participation is completely free!

You can sign up at www.pbc.guru/dyc/.

How it Works

The book club will connect through a private online forum where people can discuss the current book and network with each other. Joining the book club is completely free - you just have to get a copy of the book to enjoy. The group will read a book every two months so you'll have plenty of time for each book.

Why Should You Join?

There are three main reasons we hope you'll be excited to participate in a book club group:

1. Connect with Fellow D'Youville Alumni: Want to connect with intelligent, driven and interesting people? Joining the book club will introduce you to D'Youville Alumni across industries, generations and geographies to help you improve your network.

2. Advance your Career: A professional book club enhances your career on two fronts. First, the books you read will make you more effective in

areas critical to success like leadership, communication and productivity. Second, the network you'll be building can help you with career advice, introducing you to the right people and finding your next job.

3. Reading is Good for You: Did you know business people who read at least seven business books per year earn over 230% more than people reading just one book per year? Or that reading improves your intelligence, reasoning ability and has been linked to reducing the chance of Alzheimer's? Joining one of our book clubs will help you read more and enjoy all the benefits that come with it.

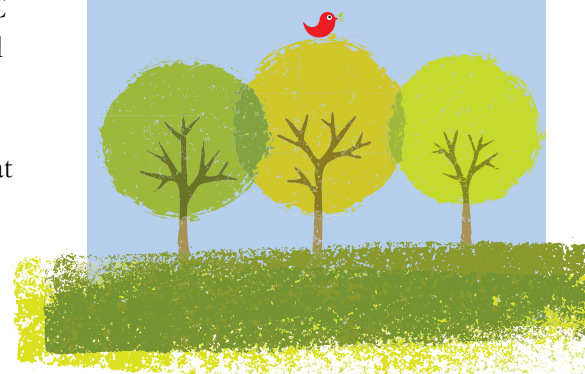
The book club will be managed by PBC Guru. PBC Guru manages professional book clubs for companies and alumni associations and will be moderating the group to help make this program a great experience for all participants. Please email them at info@pbc.guru with any questions or visit their website at www.pbc.guru.

gogreen!

D'Mensions magazine will continue to be printed but it can also be viewed online via your phone, tablet or computer. You can also opt out of receiving a printed issue.

If you prefer to not receive a paper copy of *D'Mensions* and want to receive an email when an issue appears online:

Email
alumni@dyc.edu
with your name and class year.



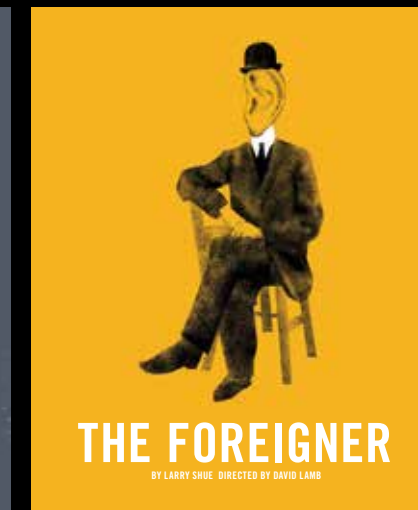
CALL FOR TICKETS!
ASK FOR THE SPECIAL ALUMNI RATE



THE KAVINOKY THEATRE



MARCH 2 — MARCH 28



APRIL 27 — MAY 20

THE KAVINOKY THEATRE 2017-2018 38TH SEASON 716.829.7668 WWW.KAVINOKYTHEATRE.COM



D'YOUVILLE OFFERING MBA ONLINE PROGRAM

SPRING 2018

D'Youville's accredited MBA program will now be offered online. The program is a 36-credit accelerated program that can be completed in 15 months! The on-line program will start January 2018. Contact Graduate Admissions for more information at 716.829.8400 or GraduateAdmissions@dyc.edu.

alumni.dyouville.edu

SPECIAL OCCASIONS & DATES

For the most up-to-date information about alumni activities, check the website: alumni.dyouville.edu. You may also call the alumni office at 716.829.7808 or e-mail us at alumni@dyc.edu

FEBRUARY

- 1 ALUMNI BOARD MEETING 6 PM — College Center boardroom
- 19 PRESIDENT'S DAY — College Closed
- 19-20 WINTER BREAK
- 26 OCCUPATIONAL THERAPY: TOPICS IN UPPER EXTREMITY REHABILITATION TOPICS
Two dates: February 26 & March 12, 5 - 6:50 PM
OTs & PTs can earn up to 4.0 Continuing Education Hours (.4 CEUs)
Register: go.dyc.edu/OT-course

MARCH

- 1 ALUMNI BOARD MEETING 6 PM — College Center boardroom
- 1 APPLICATIONS FOR KINSHIP SCHOLARSHIP DUE
- 7 HONORS CONVOCATION 2 PM — Kleinhans Music Hall
- 10 GRADUATE OPEN HOUSE
- 10 PHYSICIAN ASSISTANT DEPARTMENT'S ANNUAL MARCH MEDICAL MADNESS CME CONFERENCE
PAs & NPs can earn up to 6.0 Category I CME Credits (Pending AAPA approval)
D'Youville Academic Center (DAC), D'Youville College
www.dyc.edu/mmmpa
- 12 OCCUPATIONAL THERAPY: TOPICS IN UPPER EXTREMITY REHABILITATION TOPICS
- 26 - 2 SPRING BREAK
- 30 GOOD FRIDAY — College Closed

APRIL

- 1 EASTER — College Closed
- 3 CLASSES RESUME
- 4 DAY OF GIVING
- 5 ALUMNI BOARD MEETING 6 PM — College Center boardroom
- 7 UNDERGRADUATE OPEN HOUSE
- 11 HEALTH SERVICES ADMINISTRATION DEPARTMENT PRESENTATION:
THE HEALTH SYSTEM OF THE FUTURE — 4:30 - 7:30 PM
Keynote Speaker: Dr. Josh Luke (www.joshluke.org)
D'Youville Academic Center (DAC)
*Earn 1.5 face-to-face ACHE education credits
Please contact Ericka Morley-Soto, Program Coordinator
at 716.829.7802 or sotoe@dyc.edu for more information.
- 19 THE ART & SCIENCE OF MISSION INTEGRATION (FREE EVENT)
Keynote Speaker: Rev. Dennis H. Holschneider, CM, EdD — 4 - 5 PM
The Kavinoky Theatre / Reception to follow in Joan of Arc Hall
www.dyouville.info/mission for information and registration

MAY

- 3 ALUMNI BOARD MEETING 6 pm — College Center boardroom
- 5 LAST DAY OF CLASSES
- 7-12 FINAL EXAMS
- 20 COMMENCEMENT UNDERGRADUATE 10 AM — Kleinhans
- COMMENCEMENT GRADUATE 3 PM — Kleinhans
- 28 MEMORIAL DAY — College Closed

D'YOUVILLE ON TOUR 2018

Lorrie A. Clemo,
President of D'Youville College
will be meeting alumni
in these cities:

FEBRUARY 26
Ft. Lauderdale, Florida

FEBRUARY 27
Sarasota, Florida

FEBRUARY 28
Naples, Florida

MARCH 5
Albany, New York

MARCH 12
Washington, D.C.

APRIL 24
San Francisco, California

MAY 21
Erie, Pennsylvania

FOR MORE INFORMATION VISIT
www.dyc.edu/alumni/events

SAVE THE DATE
REUNION WEEKEND
SEPTEMBER
21-23, 2018

THANK YOU

LIST OF LOYAL DONORS

**GIFTS RECEIVED JUNE 1, 2016
THROUGH MAY 31, 2017**

Alumni donors are listed here by gift society and class year.

*Donors whose gifts have been matched by a matching gift company denoted by :**

Deceased denoted by: †

Every effort has been made to ensure that the information included is accurate and reflects the wishes of individual donors. If any errors or omissions have occurred, please notify the department of institutional advancement, 716.829.7803 or pearsona@dyc.edu, so that we may correct our records.

GIFT SOCIETIES

PRESIDENT'S SOCIETY \$25,000+

The Alfiero Family Charitable Foundation
Barnes & Noble College Bookstores, Inc.
Charles and Mary Bauer Family Foundation
A. Laurie Koessler Brosnahan '85
Caesarina Ciminelli Cardarelli '43 †
Community Foundation for Greater Buffalo
James H. Cummings Foundation
Richard E. Garman †
Marie S. and Frederic K. Houston Fund
Katherine Koessler Juhasz
KeyBank
Kenneth L. & Katherine G. Koessler Family Foundation Inc.
William and Rosemary O'Connor Lawley '60
Lawley Insurance
Estate of Margaret M. Martin †
Carl and Carol Lyons Montante '64
NYS-CCAP
The John R. Oishei Foundation
The Vincent & Harriet Palisano Foundation
Gary Quenneville
Estate of Ruth J. Schwendler
US Department of Education
WNY Power Authority

CHANCELLOR'S SOCIETY \$10,000-24,999

ABM Janitorial Services
America's Warrior Partnership
John Amershadian
Scott Bieler
Bond, Schoeneck and King, PLLC
Cha Consulting Inc.
Courier Capital Corporation
Mary Frances Curry '44 †
Andrew Dorn Jr.
Mary Jo Holland Eichner '75 *
Mary Eberl Evans '59
ExxonMobil Foundation
First Niagara Bank Foundation
Thomas J. Hanifin, Esq.
Hodgson Russ LLP
Dr. Penelope J. Klein
Paul J. and Martha N. Rees Charitable Trust
Personal Touch Food Service
The Shubert Foundation, Inc.
Ruth Smith '55
Carmela Valente '38 †
West Herr Auto Group
Ralph C. Wilson Foundation

MARGUERITE D'YOUVILLE SOCIETY \$5,000-9,999

Paul and Mary Grace Bauer
BlueCross BlueShield of WNY
Irene Weber Clair '43 *
Danforth
D'Youville College Student Government Association
Christina Barth Eberl '67
Mr. George J. Eberl
Mary Winkelman Epp '63 *
Edith M. Flanigen '50
Foundation of the Roman Catholic Diocese of Buffalo
John K. Grandy PA-C, '04
HealthNow New York Inc.
Mary Garvey Heflich '65
Kathleen Mary Kreis '67
Kenneth and Paula Keenan Koessler '67
Masiello Martucci Calabrese & Associates
New York State Education Department
Mr. Wayne Redekop
Mr. and Mrs. Wayne † R. Reilly
Alice Riehle Riley '30 †
Kathleen Hassett Seibel '73
US Security Associates, Inc.

JOAN OF ARC SOCIETY \$2,500-4,999

Catholic Health System Inc.
Crystal M. Crossett '08
CVS Caremark Charitable Trust
A. Sharon '67 and Charles Deehan
Deloitte Foundation
Melinda G. Disare, Esq.
Mary Lou Ehrne Dunn '47 †
Elbers Landscape Service, Inc.
Erie County Medical Center
Ernst & Young Foundation
Megan Lachaal Farrell '82, MD
Ronald L. Frank
Mark Hammer
Hospice Buffalo, Inc.
Independent Health Association
Dr. Robert and Barbara Shumacker Klocke '61
Eileen McCafferty Koolpe '73
Jody Lomeo
Estate of Donald MacDavid †
June Galloway McCarthy '59
Jean McGarry '57
The McGuire Group

Dale McKim III *
Robert Murphy
Estate of Robert Nielsen †
Philip A. Perna
P&G
The Prudential Insurance Company of America
Barbara Lee Rhee '82
Robert E. Rich, Jr.
Rich Products Corporation
Rite Aid
Mary Lea Rivet '63
Anne Marie Pope Rozek '66
SmartEdge
Robert Strassheim
Supermarket Management, Inc.
April Taulbee
Angelo Travale
Two Lights Foundation
JoEllen Urban

PORTER SOCIETY \$1,000-2,499

Kathleen Hensler Albertson '64
Mary Margaret Ransford Anderson '49
Patricia Bahn
Bank of America Charitable Foundation
Thomas and Judy Carr '77 † Beecher
Joseph and Marguerite Boggan
Leo A. Bradley *
Catherine M. Braniecki '73 *
Astrid Kodric-Brown '62
Frances Holland Bruce '60
Therese Brown Bruyere '47
Buffalo Bills
Eileen Clifford Cavanaugh '63
Brandan Chang
Kathleen M. Christy
Lorrie Clemo Ph.D. and Steven Nicolais, MD
Cole, Sorrentino, Hurley, Hewner & Gambino PC
Taine A. Rems Conboy '55
Dr. Kathleen Connor '64
Walter Constantine
Salvatrice LoFaso Cramer '67
Jo Ellen Perrigo Cronin '72
Barclay Damon, LLP
M. Jane Dickman *
Mary Denise Mahoney Dunford '94
Elaine O'Gorek Ehmann '64
Mary Ann Repicky Emanuele '67

Erie County Medical Center
 Roberta Rozek Evans '62
 Five Star Bank
 The Foundation for Jewish
 Philanthropies
 Judith Chaney Frey '65
 Ellen Murphy Gaffney '53
 John R. Garfoot
 Margaret Vitko Geiger '62
 Dr. Stephen Grande
 Jane Flanigen Griffin '54 PhD
 Joan M. Hall '71
 Mary Meincke Heider '75
 Mary Laski Hoffman
 Ann Flynn Holler NC, USN (Ret.) '70
 Hospice Buffalo, Inc.
 Barbara Hunter *
 IBM International Foundation
 Matching Grants Program
 Irenaeus Foundation
 Barbara G. Johansen '54
 Timothy Kane
 Dorothy Dodman Kelleher '66
 Sheila Ann Kelly '65
 Key Foundation
 Kevin B. Klotzbach
 KPMG Foundation
 Eleonore Elizabeth Kolodziej '53
 Eileen McCafferty Koolpe '73
 Mary Beth Sorbello Krolik '65
 Carol and Frank Lazarus
 Monica Cosgrove Lazarus '65
 Dr. Judith Lewis
 Liberty Mutual Group
 Ann Marie LoFaso '71
 Anne Adolf Lovett '64
 Lumsden, McCormick LLP
 Jeanne F. Lynch
 Cornelius J. Mack
 Mr. and Mrs. Vincent J. Mancuso
 Patrick Martin
 Joan Cox McCaffrey '64
 Sister Mary McCarrick OSF
 Kristine Dejneka McCarthy '98
 Ty, '98 and Kristine Dejneka McCarthy, '98
 Kate Glass McDermott-Mahon '65
 The McGuire Group
 Dorothy Higgins McNicholas '69
 Stephen Mercurio '77
 Mercy Hospital
 Moog, Inc.
 Janice Weaver Moran '73
 Linda Bilowus Moretti '81, '09
 National Board of Chiropractic
 Examiners
 National Philanthropic Trust
 New Wave Energy

Northern Chautauqua Community
 Foundation
 Maureen O'Connell '63
 Panda Surfaces Inc
 Rev. Kevin T. Peek
 Rev. Dr. Robert J. Perelli, C.J.M.
 Patricia Funnell Pfalzer '49 †
 Patricia Deck Phillips '52
 Mary Lapczewski Pyrak '54
 Elaine Juliano Regan '64
 Robert Reger, Jr.
 Marilyn L. Repsher '52
 Rich Products Corporation
 Grace Rizzo Risetto '66
 Riverrun-NA Inc.
 Mary Lea Rivet '63
 Kenneth Rogers
 Roswell Park Cancer Institute
 MaryEllen Burke Roszkowski '73
 Anne Marie Pope Rozek '66
 Dr. Linda Russ
 Lorraine Gay Russo '58
 Martha Rollek Rutowski '57 and
 Joseph Rutowski
 Savoy Contract Furniture
 James and Elizabeth Schmit
 Candice Lorena Schultz '04
 Arup Sen, PhD
 Donna Wilson Seymour '65
 Mary Ellen Smith '72
 Patricia Marino Smyton '65
 Eileen Duszynski Sowinski '56
 Dr. and Mrs. Gary P. Stoehr
 Nora B. Sullivan
 Maureen McPartland Sumera '68
 Jeanette Bihari Swartz
 Tiede-Zoeller Tile Corp.
 Maria Zuffoletta Tollefson '62
 Judith Jarnot Travers '65
 Susan Wandell Tufts-Stefanac '58
 University Orthopaedic Services, Inc.
 Mr. Charles J. Urlaub
 Patricia Lyons Van Dyke '52
 James Viapiano '78, MD
 Mary Curry Viapiano '78
 Whitten Arts Foundation
 Donald E. Will
 Caryn Wojtowicz '72
 Edward Wojtowicz
 Patricia Wagner Woods '64

FOUNDER'S SOCIETY \$500-999

Dr. G. John M. Abbarno
 Ann M. Andel '72
 Marcia Bosinski Andrews '69
 Susan Walek Bergantz '78
 Margaret Bishop Borchard '73
 Robert and Ann Stephens Brady '65
 D. John Bray
 Joan Romanowski Bukowski '56
 Louisa J. Buscaglia '69
 Mark T. Cappello '80
 Barbara Thorpe Cartee '69
 Catholic Charities of Buffalo
 Charles Schwab
 City of Buffalo
 Sandra Kolasz Dale '73
 Mr. and Mrs. H. Thompson K. Dale
 Maureen Purcell Diggins '68
 Laura Gentner DiGiulio '01
 Mary E. Dillon '72
 Janet Kelly Doan '52
 Dr. Teresa Donegan
 Eaton Office Supply Co. Inc
 E. I. DuPont De Nemours & Compnay
 Fidelity Charitable Gift Fund
 Gretchen Fierle
 Fleet Maintenance
 Kathleen Meyer Forbrich '70 *
 Anne Murray Forte '48
 Dr. Merlene C. Gingher
 Leona Reed Gonzales '57
 Grey Nuns of the Sacred Heart
 Patricia Matthews Hemmer '60
 Margaret Van Dyke Holmes '52
 Elizabeth Malecki Horrigan '66
 Mary O'Leary Hurley '73
 Christopher Jadoch, RPH, JD
 Amy Catherine Johnson '63
 Dr. Stephen T. and Mary Ann Joyce '59
 Joseph T. Kabacinski CPA
 Kaleida Health System
 Genevieve Zoltowicz Kanski '55
 Dr. Michele '11 and Dr. James Karnes
 Drs. M. Ruth Reilly '89 and David Kelly
 Mary Wilson Kennedy '68
 Mary Elizabeth Kirwan '60
 Cheryl Klass
 Bonnie Bernhardt Knoke '67
 Cecelia Scuto Kohlmeier '69
 L & L Transmissions, Inc
 Leonardo Da Vinci High School
 Helen Schnacky Lindley '63
 Rev. Janice Mahle
 Marvyn A. Mahle '11
 Joyce Kontrabecki Markiewicz '80
 Anna Frawley Martin '58
 Nathan Marton
 Mary McDonald Mascott '66

John McClester
 Ann McCormick-McQuillan '73
 Elizabeth Byron McGowan '70 *
 Louise DeSpirt McGrath '68
 Jo Ann M. Mecca '59
 Medtronic Foundation
 Germaine Merrill '74
 Julia White Miller '73
 Loretta R. Miller '50
 Carole F. Moore '70
 Chau Nguyen
 Vincenetta Ventresca O'Donnell '71
 Katie Shane O'Hara '59
 Daniel O'Leary, Jr., Ann, Katie and
 Maureen
 Albert Olszowka
 Nancy Doherty O'Mara '60
 Deborah E. Owens
 Salvatore W. Page
 Diane Audrey Palmeri '65
 Mrs. Sandhyaben S. Parikh
 Richard '82 and Roberta Page Pawlak '81
 Richard E. Pawlak '82
 Aimee Pearson
 Mary Joan Roche Peek '61
 Pharmacist's Associations of Western
 New York PAWNY
 Mary McGeever Pherson '72
 Dennis A. Pines '74
 Lisa Rafalson, PhD
 Benjamin L. Randle
 Elizabeth McDonald Reilly '52
 Carol Kosinski Riniolo '64
 Linda Roberts
 SS Peter and Paul Parish
 Ronald Santasiero MD
 Judith Trapper Siegert '69
 Sinclair Pharmacy
 Hon. Mary Slisz
 Anthony Spina
 Robert Strassheim
 Michael Fredrick Swartz '01
 Loretta Harrity Syput '66
 Ms. Robin Tolsma
 Beverly Raczynski Tomasi '68
 Patricia Skimin Touchette '66
 VALIC Financial Advisors, Inc.
 Vanguard Charitable Endowment
 Program
 Paula Moore Wagner '51
 Jeffrey Ware DC
 Norrine Brown Whissel '50
 Ronald White DPT, '92 '11
 Patricia Wrobel '68
 WUTV/WNYO
 Helen Bodkin Zuelzer '77

ST. CECELIA SOCIETY \$250-499

A-Kleen Windows, Inc.
Nancy A. Acara '47
Jeffery Agan '01
Jeffery '01 and Erin Canale Agan '02
Rosemary Huthmacher A'Hearn '61
Lauren B. Altieri '80
Joan Stahl Ast '71
Madeline Tryon Augustine '66
Deirdre Mary Bastible '73
Maureen Carroll Bender '67
Jane Anne Bigelow '67
David A. Bluett '93
Charles and Kathleen Border '15
Helen K. Bowen '54
Ilene Pisarek Braun '72
Cecilia Spano Breen '59 †
Lynn O'Connell Brennan '68
Kerry Broderick, M.D., '80
Barbara Brady Brown '64
Patricia Herbst Burke '69
Regina Garey Burke '66
Mary Joan Byrne '50
Constance Carroll Cahill '80
Dr. Gina M. Camodeca
Barbara Jean Campagna '63
CAPNA
Ann Gianadda Casarsa '50
Brian Cavanaugh
Carolyn T. Chlost, '63
John Cimasi
Michael Cimino
Mary Wichter Comiskey '62
Frances Frizzell Considine '49
Dolores Egan Cooley '49
James '89 and Tracy Holderness
Corbran '88
David A. Cristantello, PhD
Marie Caruana Crofoot '79
Ann S. Czapl, '71
Patricia Hughes Dabrowski '75
Virginia Johnson Dachenhausen '71
Patricia Woods Daigler '64
The Delta Air Lines Foundation
Mary Grace Poorten Demarse '63
DeSpirt Foundation, Inc.
John Dicky
Kathleen Barrett Dinkel '77
Eileen Post Donovan '50
Dr. Richard Dowds and Dr. Sarah
Tomlinson
Margaret King Downey '66 *
Margaret R. Wells and John Drexelius
Dolores Drobot '59
Elizabeth Isel Durr '66
Edward P. Eardley
Mark Eckstein

Elevator Maintenance of Buffalo, Inc.
Ellicott Development Co. Inc.
Robert Farwell
Marcella Farinelli Fierro '62 MD
Dr. Maureen F. Finney '97
Daniel Fish '71
Allene H. Fissler '41
Barbara Steinkirchner Fitch '57
Estate of Elizabeth A. Flood '44 †
Molly Flynn
Aileen Cosgrove Flynn '58
Ruth Kraus Foley '51
Adinoyi Garba
Lucille A. Gervase '62
Kathleen Sullivan Gold '72
Carol Hoefen Greisberger '74
Russell Gullekson
JoAnn Tymorski Hess '66
Hilbert College
Eileen Sullivan Holzhauer '71
Austin Houlding '09
Mary Jo Durkin Hughes '61
John B. Hunter
Eileen M. Idziur '53
Clement Ip
Donna Wagner Jackson '81
Kathryn Coyne Janz '70
Lee Moretti Jasinski '11
Kelley Bros, LLC.
Dr. Martin Kelly
Kathryn Ann Kohler '66
Shirley Kraus '51
Pamela M. Krawczyk-Greene '81, '89
Joyce Griffin Kurita '51
Dr. Richard Lee
Jacqueline Kurzanski Lesniewski '63
Maureen McCarville Lewis '63
Sister Jean Marie Liston GNSH
Patricia Brauch Lombardi '68
Jane M. Mago '43
Elizabeth M. Mahony '65
Dr. Kathleen Mariano
Marilyn Marzolf '68
Carol Nelson McCrea '68
Brenda McDuffie
Jerilyn Kunz McGivern '65
Marian Iacona McGowan '70
William P. McKeever
Lucy McLaughlin '77
Pam McMahon '72 and Edie Cutler
Herbert Mennen
Judith A. Merrill '61
Elizabeth Kluss Messner '75
Carol A. Milazzo '00
Patricia Smith Miller '81
Ryan Miller '05
Nicole M. Miller
Abigail Mitchell
Rosemary B. Mogavero '73

Joan Blachowicz Mohr '61
Norine McQuillen Morgenfeld '70
Kathryn Butler Murrer '69
Anne G. O'Connor '53
Maryfrances Bough Offermann '50
Catharine Guard Olsen '71
Ellen Lynch O'Shea '61
Carl Paladino
Karen Panzarella, PhD
Jane Lyons Patterson '76 *
Mr. & Mrs. Richard Patterson
Judith Po-Chedley Wilkins '74
Robert E. Pollock
Elaine G. Pond '83
Margaret Cain Price '71
Print2Web LLC
Quaker Chemical Foundation
Rapid Ray's Printing & Copying
REALM
Jack Reich
Dr. Lynn C. Rivers
Bernadette Rossi Romeo '68
Cordelia Robinson Rosenberg '67
Maria Wiesman Ryan '61
Mr. and Mrs. Joseph E. Ryan
Lorraine Drzymata Rybak '67
Betty J. Schultz '74
Robert and Arlene Shappee
Louise Smith
Paul D. Smith
Mary Hennigan Soehner '71
Julie Werth Stagliano '65
Mary Boggan Stephen '63
Stieglitz Snyder Architecture
Maria Mulderig Stilwell '58
Robert P. Strassheim
John Sullivan
Joan Kathryn Sutton '62
Print2Web
Roozbeh Tavakoli
Dr. John A. Taylor
Laura Fudala Thompson CGRN '87
Sarah Januale Treanor '65
Kathleen Gibbons Troicke '70
Craig Tyson
United Way of Buffalo and Erie County
Christine Verni '97, '07, '15
M. Katherine Lang Verso '65
Vilardo Printing
Clara Davie Voorhees
Gregory Wachowiak '95
James John Weidel '98
Margaret Wright Weinholtz '67
Marilyn Welch '67
We Pay
Alice Kazmierczak Werynski '54
Geraldine E. Westwood '73
Sharon Robinson Wheat '64
Patricia J. Winkler '51

Anson Kwame Wurapa '90
Trudy Ganczewski Zablotny '56
Pollyanna Radley Zinck '64

CENTURY CLUB \$100-249

Christine Adamczyk
Lynne Adamczyk
Norma Bouquard Adolf '54
Jeffery '01 and Erin Canale Agan '02
Theresa Vella Agostinelli '77
Mary Louise Ptaszkiewicz Albert '71
Ann Aldous
Kathryn Cuccia Alessi '69
Laurie Tomani Alexander '84
Antoinette Murzynski Andolina '63
Janet D'Arrigo Angelino '60
Joan Demuth Ansbro '52
Nancy Clement Ansteth '68
Anne Chmura Anthon '78, '12
Gretchen Drescher Anzinger '55
Barbara Rauber Arnault '68
Lynn and Christopher Arndt
Marguerite Childs Aube '69
Joan Augustyn '62
Corinne Brawn Averill '75
Ruth Justin Baldin '51
Susan Young Ballard '72
Susan Balling
Eleanor Banister
Martha Scott Barnas '77
Mark, '76 and Charlene McNamara
Barnes, '76
William G. Barrick
Margaret Killeen Barry '51
Mary Birchmeyer Barsema '75
Catherine Ahl Beal '81
Mary Kiefer Beals '66
Linda Young Beardi '68
Margaret and William Beardsley
Sara Cronin Beckley '71
Carol Grace Beckman '70
Dr. Marilyn J. Bell
Marna Dockum Bellanca '63 *
Mary O'Dowd Beltrami '76
Sheila Wright Benoit '57
Mary Bernadt Benz '70
Sharon Benz '12
Mary Ward Berkman '68
Kelly Biehls '09
Paul Joseph Biellak '86
Black Rock-Riverside NHS
Elizabeth Capron Bloom-Dunn '66
Body Blocks
William J. Boehm, '16
Mary Cornelia Collins Boesl '57

Annette Boies-Lobl '68
 Patricia Sweeney Boland '70
 Suzanne Kovarovic Bomar '66
 Kathryn E. Booth '89
 Janine Sagar Botty '73
 Tina Boucher
 Randy Bowen
 Maureen Crane Bowers '70
 Joan Bozer
 Christine Bracco '82
 Ann Marie Vacca Bradley '52
 Odane Brady
 Lynn A. Brant
 Gary and April Breen
 Roberta Purser Breitbeil '63
 Virginia Daly Briand '67
 Ian, '97 and Susan Hornung Brown, '98
 Ann Odell Brown '45 †
 Eileen Fries Brunotte '47
 Deborah Bruch Bucki '75
 Jack and Margaret Buckle
 Kristina Buran '10
 Marie Tinto Burns '59
 Gail Schintzius Busillo '58
 Maureen Cahill '72
 Anthony and Jean Bisantz Caldiero '69
 Gail Vinch Callahan '63
 Christine Kaszuba Cantillon '63
 Marilyn Cauty '62
 Ann Woodward Cauty '77
 Eileen Brobson Cape '71
 Cara Medical
 Holly Carpenter
 Joan Wittig Casey '53
 Mary Anne Casey '64
 Susan Donnelly Cavanaugh '70
 Theresa Martin Cavaretta '57
 Drew J. Cerza '84
 Fay C. Chelmos
 Marla Cheney
 Karen Cherry '65
 Dr. Frank Chi
 Marianne Chiumento '69
 Victoria A. Christopher '70
 Mary Jo Ciaccia '75
 Marilyn Ciano
 Rita Colicchia '66
 Arlene Rycombel Collins '61
 Patricia Comerford-Haley '70
 Gina Cotroneo Conciardo '88
 Nancy Coons Conley '55
 Sr. Mary Brendan Connors GNSH '54
 Michele A. Cook '75, MD
 Jane Devine Corbelli '73
 Monica Marzolf Cosgrove '66
 Sandra Costanza
 Linda Ramich Costello '66
 Eileen Cregg '66
 Mary Judith Calandra Cremeno '70

K. David Crone
 Kathleen Kane Crowe '69
 Timothy Crowe '01
 Melissa Gray Crystal '64
 Crystal Clear Pools, Inc
 Susan Jolley Csizmar '69
 Richard '80 and Philomene Kosmoski
 Cudzilo '77
 Dorothy Denny Cumber '55
 Anne Shields Curto '60
 Ann S. Czaplá '71
 Dorothy Smith Czarniak '57
 Marie Czarnota '06
 D'Youville College North Country
 Chapter
 Margaret Dougherty Daley '47
 Kathleen Mary Daley '67
 Kathryn Mullen Daniels '98
 Crista Dashnaw
 Lois M. David '54
 Mary Jane McDonald Dean '49
 Elaine Knab Deangelis '63
 Dorothy Kazukiewicz Deavers '71
 William Delaney '78
 Miss Lisa DeMarco
 Marguerite Bacigalupo Dennis '73
 Mary McGrath Devine '73
 Patricia Pantera Di Sessa '67
 Jeanne Mastin Dibble '65
 Linda R. Dixon-Muscarella '71
 Kathleen Donius
 Marianne Cummings Donovan '63
 W.P. Dowdall
 Margaret King Downey '66 *
 Linda June Drajem '64, Ph.D.
 Eileen Tubridy Drinkwater RN '71
 Maureen Driscoll-Hudack '72
 Margaret Donahue Ducayet '71
 Martha Ann Duffy '71
 Sister Mary Kathleen Duggan GNSH '47/†
 Dr. Joseph A. Dunn
 Elsa Haas Durichek '66
 Elizabeth Drescher Duzen '70
 Rita Winiecki Dykstra '69
 Eastern Amputee Golf Assoc
 Marsha Edelman
 Jean Edgcomb
 Elizabeth Egan '79
 Laura Louise Eisenzopf DPT, '03
 Ann Elford '93
 Mary Dougherty Elias '65
 Dorothy Rubritz Ellis '70
 D.W. and Michelle Bobseine Emerling '70
 Sandra B. Englert
 Doris Carlo Erickson '47
 Alan and Susan Espersen
 Patricia Anne Barry Farley '63
 Rita M. Farrell '73
 Paul Fasanello '85

Marion Fay
 Virginia R. Federico '59
 Maureen C. Feeley '01
 Peter Fenn
 Natalie Miano Fiala '63
 Victoria Riley Ficco-Panzer '65
 Dr. Roger Fiedler
 Barbara Mary Filipiak '72
 Dr. Maureen F. Finney '97
 Linda Fisher
 Mary Cooper Fitzpatrick '66
 Anne Flansburg
 Dr. Peter Forgach
 Elizabeth McGinley Fox '53
 Doris Becht Frainier '49
 Dr. Thomas M. Frank
 Mary Grace Scott Frank '70
 Arlene M. Freitas '61
 Patricia B. Frey '70
 Marilyn Lalley Fritz '69
 Keith Frome
 Margaret M. Frye
 Joanne Wall Fuchs '51
 Rebecca Hallinan Fueger RN, MS '79
 Mary Pat Furey '79
 Linda Whelan Furlani '72
 Rose Payssa Furman '64
 Mary Dawson Furnanz '70
 Stefania Fynn-Aikins '05
 Bette O'Rourke Gagola '53
 Kathleen Larson Gallagher '72
 Marlene Kenney Galligan '58
 Mary Gannon '00
 Dolores Rinaldo Gazzo '57
 Virginia Gebus '72
 Christian Sauerbier Gee '74
 Diane Ciminelli Geerken '71
 Mary Ann Norton Gehan '63
 Dan Gerken
 Dorothy Stein Gianturco-Corr '58
 Cynthia Palenski Gibson '84
 Coleen Gilbert
 Frank S. Ginnetti '02
 Carol Ruth Glaeser '65
 Jeanne Marie Glair '67
 Penelope A. Godwin '63
 Marie Gebhard Goins '75
 Margaret Goodman
 Cheryl Newell Goodridge '79
 Elizabeth and Stephen Goodridge
 Barbara McGrath Gorga '72
 Elizabeth Short Grady '68
 Dr. Joseph A. Grande
 Mary B. Greeley '69
 Antoinette Orlando Green '60
 Ann Hoffman Grifasi '87
 Lois Grollitsch
 Mrs. Joan W. Gruen
 Peter Gruen '13

Phyllis Fiutak Gulczewski '60
 Dr. Cristian Gurita
 Alicia Herrera Gutierrez '67
 Nancy E. Hackett '80
 Kathleen Hadrych-Ross '72
 Joanne Lodick Haley '66
 Joan M. Hall '71
 Dr. Julia Hall
 Colette M. Hall '69
 Margaret Haberman Hammerl '56 †
 Barbara Hurewitz Hankin '72
 Eileen Hanley-Noworyta '78, '15
 Katherine Ashley Hannan '49
 Dr. Michael and Mary Furlong Hanzly '73
 Mary Ann Kudla Hargrave '63
 Darryl R. Hart '88
 Carol MacDonald Hartle '60
 Elenora Heffner
 Joan M. Heine '57
 Mary Healy Henry '53
 Terry Herring
 Joan G. Heubusch '54
 James R. Hewitt '83
 Betsey Higgins
 Dorothy A. Hobart '60
 Hoffman Enterprises
 Sharon Danahy Hoffstetter '70
 Sharyan Schmitt Hohensee '70
 Maryanne Quatrano Holleran '70
 Rosemary P. Holmberg '65
 Marie L. Horn '70
 Fran Hornung Jr.
 Elizabeth Westermeier Hossenlopp '69
 Marilyn O'Hara Howe '74
 Carole Bird Huff '59
 Walter and Patti Humphrey, II
 Jeff '92 and Johnna Hermann Hyde '90
 Noreen Toomey Iggoe '50
 Jay Ingerson
 Mary Molea Iwanenko '94 and
 Dr. Walter Iwanenko '93
 Sheila Bleab Jacobs '68
 Paula Bouchard Jacques '70
 Maureen Naioti Jandrisevits '82 *
 Mark Jans '95
 Virginia H. Jarzembowski '47
 Linda Dawkins Jenkins '78
 Graceann Bartello Johnson '64
 Anna Mae Robillard Jones '38
 Erin Jordan
 Clarann Kross Josef '71
 Theresa Pytel Joyce '73
 Eugenia Conlin Judge '61
 Mary Elizabeth Jurca '81
 Dr. Joseph Jurkowski
 Diane M. Kaczmarek '67
 Melody Kaczmarek '69
 Christine Morey Kalish '69
 Grace Kammerer

D'Youville

Debra Nowak Kasper '77	Christine Lubelski '71	Janice Schwandt Molfese '71	Mary Ann Perry '74
Kathleen McFadden Kasprzak, PhD '70	Mary Lytle Luch '66	Barbara Monkelban	Daria L. Petrilli-Eckert '77
John and Jane Kearns	Barbara O'Brien Luchette '78	Martha Morales	Laryssa Petryshyn
Mary Malay Keeney '73	Mary Grace Murray Lucier '60	Maryellen Post Morgan '44	Mary Beth Pfeiffer '84
Irene Dillon Kelly '69	Michele Woyshner Mach '78	Mary Ellen Moriarty '70	Sue Ann Fitzgerald Phillipp '66
Mary Jane Kelly	Janet E. Madden '85	C. Jean Morton '58	Sarah P. Pictor DPT, '06
Madonna Kelly '75	Margaret Lahiff Maggio '59	Alice Happ Moulton '47	Virginia Cowan Pierce '68
Carol Jolley Kent '63	Robert M. Mahany	Jim Mule	Margaret Hagerty Pierce '68
Constance Nuttall Kerner '62	Barbara Davis Makarewicz '73	Sandra Searle Mulryan '60	Anita Louise Polizzi '79
Rosemary E. Kersten '52	Geraldine Sherman Maley '54	Josephine Chella Mulvihill '67	Pamela and Lansing Pollock
Mary Jane Key '89	Barbara J. Malinowski '69	Patrick L. Murphy '89	Patricia Keane Polowy '73
Mary Reilly Keysa '66	Mary Theresa Mancuso '55	Jean Flynn Murray '69	Louise Nazzarett Porreca '46
Lois Waterman Kibler '70	Mary Ellen Stenclik Manfred '77	Sue Murray	Jean Donovan Porter '46
Maureen Reed Killeen '70	Martin A. Mann '74	Ellen Boggan Murray	Claire Hughes Powers '64
Ross King	Denise O'Connor Mansfield '70	Mary Lynn Murrett '71	Joan Phelps Prem '67
Jane Kinney-Svejkar '49	Anastasia Ilkiwskyj Marc '70	John Myers '85	Dolores Gaeta Prezyna '70, '14
Margaret Arnone Kinsella '91	Janet Gerdelman Marchetta '74	Ann Neale '69	Joanne J. Privitera '66
Frances Curro Kipley '57	William Joseph Mariani EdD '07 †	Colin Nekritz	Janice L. Przybylski '62
Norine Callahan Kirkpatrick '59	Joseph Marinaccio '82	Mary Ann Nelson, '69	Joanne Lysiak Ptak '57
Christine Kedzierski Kirsch '63	Margaret Gilhooley Marino '76	Carey MacBrayer Nelson '79	Bernadette Jordan Pursel '69
Kathleen Ann Klocke '65	Dorothy Naber Markey '58	Network For Good	Sandra R. Putnam '69
Jean M. Knopinski '48	Patricia Halpin Maroney '54	Helen Newman '70	Ann Marie Athans Quinn '84
Barbara A. Knorr '74	Nathan Marton	Steven Nicolais	Susan McAllister Quinn '71
Maryann Losi Koerner '85	Grace Cosgrove Martorana '71	Suneil Ninan	R. Thomas Burgasser, PLLC
Patricia Maslyn Kohler '71	Ann Weiner Masse '81	Judith Ann Nocek-Genung '76	Judith Rauls '63
Kathleen Arganbright Koon '65	Ronald Matthews '77	Michael F. Noe	Eleanor Finigan Redmond '58
Gery A. Kopryanski	Verna Blassey Mattimore '50	Cheryl Hettler Noetscher '71	Honora Starkey Reger '71
Diana Zywicki Koscinski '57	Paula M. Mazur '77 MD	Andrew J Nosek, '16	Kathleen Ryan Reilly '69
Joan Johnston Kostusiak '63	Marie Gordon McCarthy '61	Mary Margaret Nowak '97	John Reilly
Mary Volker Kotansky '63	Mary Smith McCarthy '80	Dr. Patricia Nowakowski	Marie Santercole Repka '52
Edward '02 and Dr. Susan Kowalewski	Thomas McCarthy	Patricia Rejent Nu Dyke '49	Rosalie Riforgiato
Jon Kraus	Kathleen F. McCauley '81	Marianne Koch O'Brien '80	Rita M. Riley '66
Mr. and Mrs. Robert Kresse	Theresa Mago McClure '72	Eileen O'Brien-Cardona '71	Mary McCormick Riley '59
Mary Ellen Kunz '70	Mary Elizabeth McCourt '75	Patricia Matthews O'Bryan '71	Susan Duggan Rimlinger '69
Michele Quadrini Kuznitz RN '80	Gloria Drake McDonald '49	Irene Marie O'Connor '52	Rita Bowen Rivers '67
Dr. James Lalley	Judith Wade McFadden '76	Margaret Soplop O'Connor '72	Margaret O'Hara Rizzo '61
Jean Curtin Lalor '69	Marilyn McGee '65	Teresa O'Connor	Paula Hogenkamp Robertson '69
David Lamb	Kathleen Dietl McGinn '80	Kathleen O'Hara	Sister Denise A. Roche, GNSH '67
Mary Lambert '72	Elizabeth Bona McGoogan '71	Mark O. Okafor '01	Sandra Niemczyk Roderick '70
Landmax Data Systems, Inc	Jeannine McInnis '99	Barbara Pecora O'Neill '62	Sheila Collins Rosowicz '75
Patricia Lanthier '72	F. Natalie Scamurra McIntosh '58	Sr. Jean E. O'Shaunecy GNSH '54	Audrey Schafer Ross-Klein '56
Maria B. Lapaglia '79	William P. McKeever	Donna Fisselbrand Owen '70	Adele Nowak Roycroft '61
Mary Ann Stanislawski Larson '55	Susan Zorfas McLanahan '10	P&A Administrative Services Inc	Deanna M. Rusek '11
Theresa Cosgrove Laslo '67	Johanna Melendez	Barbara Agro Paige RN, BSN '80	Dr. Linda Russ
Patricia Rebman Lasota '58	Barbara A. Micare '70	Patricia R. Palma '82	Raul Russi '83
Patricia Ward LaVell '62	Patricia L. Michael-Serio '56	Kathleen Hulbert Palmer '82	Carol Ann Ryan '71
Lisa Ann Lavrey DPT, '03, '05, '13	Marianne McKinley Michaud '63	Leslie Ann Palm-Schwartz '76	Martha Haar Ryan '73
William and Eleanor Lawson	Thomas Milano '97	Ann Burgis Panepinto '60	Constance Bell Saeva '58
Khuyet T. Le	Carol A. Milazzo '00	Karen Reilly Paonessa '62	Saint-Gobain Corporation Foundation
Mary Leddy '75	Jacquelyn Gooslin Milbrand '08	Martha Sauerbier Parker '77	Shirley Sampson
Sara Orton Leddy '98	Pamela Smith Miller '81	Rose Marie Parrinello '55	Paula Bickford Sanan '73
Susan Andol Lee '77	Sue Ann Leman Miller '68	Marjorie Hofbauer Pastalaniec '67	Catherine Finn Sardo '77
Nancy Sprague Leed '70	Mary Elizabeth Cosgrove Miller '57	Christine Collins Pattantyus '67 *	Kathleen Twist Sartini '69
Nancy Lenney '50	Julia Dillon Miller '68	Dorothy Uschold Pattison '58	Carol Chiappetta Scalise '59
Carol Steen Leonard '68	Edwin A. Mirand, PhD, D.Sc. †	Helen Johnson Pearlman '79	Lu Ann Scalisi '67
Joan Condron Lesch RN '68	Abigail Mitchell	Margaret O'Connell Pech '51	Janice Pritchard Scammell '66
Eileen Lewis '68	Douglas Moffat '75, MD	Mr. and Mrs. Richard Penfold	Janet A. Schachner '74
Barbara Libby	Bonne Tymorski Mogulescu '65, PhD	Thora Blackwood Perkins '69	Richard C. Schaefer '76
Marilyn Ripley Lilly '69	Kathleen Moisiejewicz '63	Jamel C. Perkins	Jeanne Orrange Schenk '68

Florence Schimert-Krieter
Margaret Schlotterbeck '83
Donald Schmidle
Frances Schmidt
Sara Magher Schoetz '64
Thelma "Pat" Brennan Schofield '70
Pamela Sheehan Schreck '81
Earl Schunk
Joyce Polizzi Seegel '65
Louise Ellen Seereiter '67
Anne Hogenkamp Sellers '70
Dr. Arup Sen
Barbara Serio '48
Cory Nicholls Shaffer '88, '00, '14
M. Patricia Cullen Shanks '66
Mary Ann Sharrow '57
Cathy Shelton '70
Victoria J. Shepardson '76
Karla Simmeth Sherwood '89
Janet Walters Shipley '63
Ellen Siller '69
Olivia Lovullo Simpson '74
Mary Ann Schieder Skinner '76
Kathleen M. Slayton EdD, '64
Sheila M. Sloan '75
Peggy (Pixie) Sloan '67
Karen Justinger Smith '73
Lindsay Olsen Smith '05
Barbara Harrity Smith '64
Janet L. Smith '73
Marcia Szymanski Smith '74
Cathleen Curran Snyder '65
Anna Mae Sokusky '69
Joan Kolkmeier Speck '67
Joan Spencer '63
Rosalie Vicario Sperrazza '64
Anthony Spina
Mary Elaine Henning Spitler '70
Karen Matus Stalker '67
Linda Farinelli Stanek '67
Mr. Patrizio Stanziano
Florence Kalenik Stapleton '67
Sally Kreuzer Stefanick '57
Joyce Hoffmeyer Stephens '54
Linda Kane Stievater '63
Margaret Cosgrove Stiglianese '70
Melissa A. Stiles
Gary R. Stillman '91
Virginia Heimink Stramaglia '84
Christine Stravino '63
Patricia Atkinson Stroh '49
Maria Jeziorski Stubing '62
Kenneth J. Stuczynski '91
Maureen O'Brien Sullivan '77
Sue Sullivan
Cathe Swafford '69
Anne Cameron Swantz '78
Mary Ann Pankiewicz Szarmach '63
Judith T. Szematowicz

Elaine Molenda Szulewski '65
Suzanne Woodward Szustakowski '66
Ann Todd Talley '74
Cynthia A. Childs Taylor '84
Ruth Taylor '99
Patricia Herbst Telesco '71
Janice M. Thape '80
Maryellen Quinn Thirolf '67
Mary Jackson Thomas '65
Richard Thompson
Catherine M. Torre '58
Rosemary Mustarelli Townley '73,
PhD, LLD
Margaret Townsend '69
Kyle W. Trimble DPT, '09
Judith Winner Tuori '74
Kathleen Navarro Twist '74
Margaret Kraszewski Umhauer '71
Dr. Theresa A. Vallone '04, '11
Patricia Lyons Van Dyke '52
Peter A. Van Dyke '85
Juli Van Woert
Nancy A. Vanderlinde '69
Vendini
Assunta Campanile Ventresca '90
Dr. Steven Diver and Jan Vesper-Diver
Catharine Halloran Vondrak '62
Catherine Galvin Voss '55
Evelyn Wakshull
Eleanor Smith Wall '72
Barbara Bergler Walleshauser '64
Loraine Block Wallmeyer '51
Mary Belle Lindsay Walsh '49
Rosemary Walsh '49
Dr. Todd Walter
Maureen Dawson Ward '62
Carolyn Wasielewski '68
Lucille Calabrese Watford '67
Cleo Newton Watkins '72
Col. J.B. Weber, 898 Aux.
Constance Musial Weise '62
Patrick and Carol Welch
Matthew Wendling, '16
Elizabeth Carraher Whalen '48
Rita Cusimano Whalen '47
Audrey Heimink Whalen '69
Ronald White DPT, '92 '11
Cheryl M. Whitman '74
Jeanne Dumont Wholey '78
Lorraine Bucki Wiancki '68
Janet Kroff Wiehle-Amund '66
Ellen Lagonegro Wierzbieniec '73
Margaret Roche Wietig '68
Mary Kittle Williams '67
Veronica J. Williams-Goden '99
Elizabeth DeFino Wilson '71
Veronica Shannon Wingen '65
Barbara Novaro Winkowski '60
Wayne D. Wisbaum

Susan Larkin Wisniewski '71
Caryn Wojtowicz '72
Bette Frascella Wolf '65
Barbara Ursano Woods '68
Carole Brunetto Woomer '82
Phyllis Wray '65
Barbara O'Brien Wright '70
Nina Wright
Barbara Moore Yates '51
Mary F. Yeager '61
Nelson Young
Patricia Riedel Youngberg '69
Shirley Gerwitz Zahm '67
Omiros Zambigadis '95
Karen Ziemianski '83
Joanne Kajdan Zieziula '65
Gloria Solecki Zieziula '69
Jean C. Zimmermann '51
Dorothy Breen Zimmermann '50
Mary Janisch Zimpfer '56

Laura Elizabeth Dombkowski '14
Amanda Morgan Drake '15
Tracy Lynn Elwood, '16
Christopher Flores '14
Laura Catherine Cipriani Franklin '13
Michael Fraser '14
Ronald Eugene Fugate '13
Dr. Travis Fuhrmann '14
Dr. Maria Fusco '14
Melissa Gillen '14
Peter Gruen '13
Takao Hattori '13
Kyle William Heassler, '15
Franklin Johnson '15
Danielle Anne Kirchner '17
Zach James Klapp '16
Adam Klarowski '13
Rebecca Klein '17
Laura Eve Klopp '13
Leslie C. Krentz '95, '14
Felicia Kreuzer '16
Christopher Krueger '13
Lisa Ann Lavrey DPT, '03, '05, '13
Caitlin Loftus '14
Kaitlin Marie Maxwell '13
Claire T. McGuire '14
Justus Ndyamukama '13
Andrew J Nosek, '16
JuMan Park '14
Erin Pennington '15
Kristen Rebecca Petrushesky '16
Aimee Pfuntner '15
Michael Puntillo '15
Brian Gabriel Schuster '15
Cory Nicholls Shaffer '88, '00, '14
Mark Siedlecki '15
Verneice Bromell Smiley-Delahanty '13
Matthew Smith '14
Catherine Grace Sutherland '15
Justin S. Taylor, '17
James P. Thore '14
Nga Truong '13
Tylor R. Vaillancourt '12
Kathryn Marie Vanvalkenburg, '17
Christine Verni '97, '07, '15
Matthew Ryan Veronica DPT, '12
Natalie Jean Vetter '15
Daniel Martin Vyverberg '17
Jenna R. Warren '15
Matthew Wendling '16
Jennifer Lynn Wingood '17
Sandra Lee Winiasz '15

RED & WHITE SOCIETY

GRADUATES FROM THE PAST FIVE YEARS

Mah-Rukh Waqar Anjum '14
Danelle M. Backert, '17
Jessica Banning '15
Patrick Donald Barber '14
Jolynn Becker '15
Samantha A. Bellavia, '16
Heather M. Beyea, '17
Courtney Bickford '15
Dr. René Binner '17
William J. Boehm, '16
Dr. Michael Harvey Botros '15
Cierra D. Bush, '17
Ciera Cammilleri, '17
Shawn Campbell '14
Brenda Sue Passow Chadwick '13
Emily Rose Cheung '13
Devlynn M. Chlebowy, '17
Lauren Ciurzynski '13
Joseph Nicholas Colasuonno II '15
Robert James Dean '14
Emily DiPaola '15

CLASS GIFTS

CLASS OF '30

Alice Richle Riley †

CLASS OF '38

Anna Mae Robillard Jones

Carmela Valente †

CLASS OF '41

Allene H. Fissler

CLASS OF '43

Caesarina Ciminelli Cardarelli †

Irene Weber Clair *

Jane M. Mago

CLASS OF '44

Mary Frances Curry †

Elizabeth A. Flood †

Maryellen Post Morgan

CLASS OF '45

Ann Odell Brown †

CLASS OF '46

Mary Hoar Becht

Annette Smith Kuebler

Louise Nazzarett Porreca

Jean Donovan Porter

CLASS OF '47

Nancy A. Acara

Mary Schweitzer Bauer †

Eileen Fries Brunotte

Therese Brown Bruyere

Margaret Dougherty Daley

Sister Mary Kathleen Duggan GNSH †

Mary Lou Ehrne Dunn †

Doris Carlo Erickson

Rosalie Lomanto Gimbrone

Virginia H. Jarzembowski

Alice Happ Moulton

Rita Cusimano Whalen

CLASS OF '48

B. Jean Harrington Duggan

Audrey Lemke Eisenhardt

Mary Drescher Feldman

Anne Murray Forte

Jean M. Knopinski

Emilie Schifferli Quigley

Grace Kilbert Schneider

Barbara Serio

Elizabeth Carraher Whalen

CLASS OF '49

Mary Margaret Ransford Anderson

Shirley Kreish Christy †

Frances Frizzell Considine

Dolores Egan Cooley

Mary Jane McDonald Dean

Margaret Tronolone Debo

Mary Honan Fitzgerald

Doris Becht Frainier

Katherine Ashley Hannan

Jane Kinney-Svejkar

Gloria Drake McDonald

Eileen E. Montana

Mary Mahaney Murrett

Patricia Rejent Nu Dyke

Patricia Funnell Pfalzer †

Patricia Atkinson Stroh

Wanda Weiksnar Sullivan

Mary Belle Lindsay Walsh

Rosemary Walsh

Dolores Franzek Zabrocki

CLASS OF '50

Rita Radice Barber

Mary Joan Byrne

Ann Gianadda Casarsa

Joanne Connolly Conroy

Eileen Post Donovan

Mary Mattimore Elwell

Edith M. Flanigen

Noreen Toomey Igoe

Nancy Lenney

Evelyn Smith Ludeman

Verna Blassey Mattimore

Loretta R. Miller

Maryfrances Bough Offermann

Jennie Liotta Santuz

Margaret Callahan Sidford

Norrine Brown Whissel

Dorothy Breen Zimmermann

CLASS OF '51

Ruth Justin Baldin

Margaret Killeen Barry

Nancy Baldwin Druar

Ruth Kraus Foley

Joanne Wall Fuchs

Marie E. Higgins

Shirley Kraus

Joyce Griffin Kurita

Yvonne Haykel Labaki

Adele Depasquale Marino

Margaret O'Connell Pech

Nancy Bemb Poorten

Helene M. Scott

Paula Moore Wagner

Lorraine Block Wallmeyer

Lois M. White

Patricia J. Winkler

Barbara Moore Yates

Jean C. Zimmermann

CLASS OF '52

Joan Demuth Ansbrow

Sister Anne Boyer GNSH

Ann Marie Vacca Bradley

Margaret K. Butler

Agnes A. Cristina

Agnes Crowley †

Janet Kelly Doan

Elizabeth Gardner Flynn

Mary Steinkirchner Frueh

Mary Carol Kelleher Herwood PhD

Margaret Van Dyke Holmes

Rosemary E. Kersten

Jeanne M. Maxwell

Florence Rauls Notto

Kay Ronan O'Connell

Irene Marie O'Connor

Patricia Deck Phillips

Elizabeth McDonald Reilly

Marie Santercole Repka

Marilyn L. Repsher

Rita Miskell Schindler

Patricia Lyons Van Dyke

CLASS OF '53

Dolores Cyprys Adams

Bernadette D. Barton

Joanna Fili Bohn

Joan Wittig Casey

Mary Ingrassi Demunda

Theresa Jarzembowski Dulski EdD

Elizabeth McGinley Fox

Ellen Murphy Gaffney

Bette O'Rourke Gagola

Lucretia Russo Gill

Mary Healy Henry

Eileen M. Idziur

Eleonore Elizabeth Kolodziej

Roselind A. Mercurio

Anne G. O'Connor

Jean Witte Whitney

CLASS OF '54

Norma Bouquard Adolf

Helen K. Bowen

Edith Carfagna Buscaglia †

Sister Mary Brendan Connors GNSH

Kathleen Martina Damiano

Lois M. David

Annamarie Castiglia Fregelette

Jane Flanigen Griffin PhD

Joan G. Heubusch

Barbara G. Johansen

Josephine Belasik Ledwin

Geraldine Sherman Maley

Frances Wood Maloney

Patricia Halpin Maroney

Virginia Nowak

Sister Jean E. O'Shaunecy GNSH

Mary Lapczewski Pyrak

Joyce Hoffmeyer Stephens

Rose McFadden Wells

Alice Kazmierczak Werynski

CLASS OF '55

Gretchen Drescher Anzinger

Diane Pero Chiavetta

Taine A. Rems Conboy

Nancy Coons Conley

Dorothy Denny Cumber

Mary Frances Danner

Genevieve Zoltowicz Kanski

Mary Ann Stanislawski Larson

Livia Lovallo

Mary Theresa Mancuso

Geraldine Kreutzer McMahon

Angeline Padula

Rose Marie Parrinello

JoAnne Siragusa

Ruth Smith

Catherine Galvin Voss

Mary Jane Minner Wilson

Marie Zafron

CLASS OF '56

Anne Battista

Joan Romanowski Bukowski

Helen Garceau Devlin

Sheila Coughlin Green

Margaret Haberman Hammerl †

Sister Barbara J. Harrington GNSH

Eleanor Rolfie Holden

Angela Leone Karlsen

Joan Gruber Knab

Rosalie Parlato Krajci

Patricia L. Michael-Serio

J. Sue M. O'Hara

Grace Viele Renzo

Barbara Myers Rogers

Audrey Schafer Ross-Klein

Sheila Ryan Scandurra

Eileen Duszynski Sowinski

Janet Hylkema Taylor

Joan Nicaise Urban

Trudy Ganczewski Zablotny

Mary Janisch Zimpfer

CLASS OF '57

Catherine Closs Anderson

Sheila Wright Benoit

Mary Cornelia Collins Boesl

Theresa Martin Cavaretta

Dorothy Smith Czarniak

Barbara Steinkirchner Fitch

Dolores Rinaldo Gazzo

Leona Reed Gonzales

Joan M. Heine

Marion Gargiulo Holinaty

Frances Curro Kipley

Diana Zywicki Koscinski

Marlene Nowicki Kotlowski

Jean McGarry

Mary Elizabeth Cosgrove Miller

Patricia Kilroy Molnar

Gisella Schinner Moss

Marilyn Turner Panzica
Joanne Lysiak Ptak
Martha Rollek Rutowski
Mary Ann Sharrow
Sally Kreuzer Stefanick
Mary H. Thomas
Mary Theresa Argentieri Walsh

CLASS OF '58

Ann Crowley Bauman
Felicia Smaczniak Bosinski
Kay Erickson Burch
Gail Schintzius Busillo
Therese Conlin Clarke
Aileen Cosgrove Flynn
Annrose Schubert Freeman
Marlene Kenney Galligan
Dorothy Stein Gianturco-Corr
Joann Brossoie Holmberg
Patricia Rebman Lasota
Dorothy Naber Markey
Anna Frawley Martin
Grace Schumacher McGuire
F. Natalie Scamurra McIntosh
C. Jean Morton
Dorothy Uschold Pattison
Marie Quinn
Eleanor Finigan Redmond
Marjorie O'Rourke Rick
Lorraine Gay Russo
Constance Bell Saeva
Maria Mulderig Stilwell
Catherine M. Torre
Susan Wandell Tufts-Stefanac
Joanne Geiger Welchoff

CLASS OF '59

Joanne Schulz Bailey
Barbara Lach Biedny
Mary Eveleigh Biracree
Cecilia Spano Breen †
Marie Tinto Burns
Dolores Drobot
Mary Eberl Evans
Virginia R. Federico
Sylvia L. Grendisa
Carole Bird Huff
Mary Carlo Joyce
Mary Kathleen Keane
Norine Callahan Kirkpatrick
Madonna Salerno Lojaco
Margaret Lahiff Maggio
June Galloway McCarthy
Jo Ann M. Mecca
Katie Shane O'Hara
Mary McCormick Riley
Carol Chiappetta Scalise
Margaret Mary Wagner

CLASS OF '60

Janet D'Arrigo Angelino
Louise Mary Balling
Duane Macleay Berkman
Frances Holland Bruce
Barbara A. Chmielewski
Anne Shields Curto
Katharine Hayes Gaul
Susan Gray Gibbs
Nancy Lopresti Goodrich
Antoinette Orlando Green
Phyllis Fiutak Gulczewski
Carol MacDonald Hamle
Patricia Matthews Hemmer
Dorothy A. Hobart
Mary Elizabeth Kirwan
Rosemary O'Connor Lawley
Carmella Lazzaro Losi
Mary Grace Murray Lucier
Sandra Searle Mulryan
Brenda P. Murray
Beverly Soja Nawrocki
Barbara Nowaczyk
Nancy Doherty O'Mara
Ann Burgis Panepinto
Rosemary Lechner Scharf
Camille Forti Tower
Barbara Novaro Winkowski

CLASS OF '61

Rosemary Huthmacher A'Hearn
Christine Ulicki Bellanti
Norma Heberger Brimstein
Barbara Connelly Brumpton
Linda Knell Bumbalo
Arlene Rycombel Collins
Nadine Lennik Fanelli
Arlene M. Freitas
Mary Casey Hiel *
Mary Jo Durkin Hughes
Shirley Mozdziak Ingram
Eugenia Conlin Judge
Barbara Schumacher Klocke
Rita Margraff GNSH
Marie Gordon McCarthy
Judith A. Merrill
Joan Blachowicz Mohr
Ellen Lynch O'Shea
Mary Joan Roche Peek
Margaret Maher Price
Margaret O'Hara Rizzo
Adele Nowak Roycroft
Maria Wiesman Ryan
Patricia Regan Ryan
Marion Fulmines Sionko
Mary F. Yeager

CLASS OF '62

Joan Augustyn
Carol Fields Beato

Eileen M. Burke Sherman
Carolyn Amrozowicz Calderon
Marilyn Canty
Grace A. Case
Catherine Luby Ceranski
Jacquelyn Kempa Church
Jeannette Kirkland Clinton
Mary Wachter Comaskey
Mary Ann Brett Corcoran
Roberta Rozek Evans
Marcella Farinelli Fierro MD, SCD
Margaret Vitko Geiger
Lucille A. Gervase
Zdenka Gredel-Manuele
Annette DiFazio Gullo
Patricia Meade Heavey
Elizabeth Seereiter Hogan
Constance Nuttall Kerner
Astrid Kodric-Brown
Patricia Ward LaVell
Denise Mahoney Loricchio
Therese LaPiana McNichols
Laura McCann Minnie
Patricia Mostyn-Aker
Patricia Kasprzyk Mulvey
Diane Peschio Naples
Barbara Pecora O'Neill
Karen Reilly Paonessa
Janice L. Przybylski
Mary McGrath Remenicky
Anna Garback Richardson
Maria Jeziorski Stubing
Bonita Santillo Sturniolo
Joan Kathryn Sutton
Maria Zuffoletta Tollefson
Catharine Halloran Vondrak
Maureen Dawson Ward
Sharon Fenlon Watz
Carole Carson Webb
Constance Musial Weise
Ellen Hedger Winkler

CLASS OF '63

Antoinette Murzynski Andolina
Marna Dockum Bellanca *
Diane Hoke Betz
Valerie Thielman Blind
Roberta Purser Breitbeil
Gail Vinch Callahan
Barbara Jean Campagna
Christine Kaszuba Cantillon
Eileen Clifford Cavanaugh
Carolyn T. Chlosta
Theresa M. Costello
Elaine Knab Deangelis
Mary Grace Poorten Demarse
Carole DiCesare
Marianne Cummings Donovan
Sister Marie Cecile Egan GNSH
Mary Winkelman Epp *

Patricia Anne Barry Farley
Natalie Miano Fiala
Mary Ann Norton Gehan
Elfriede Rettig Georgal
Penelope A. Godwin
Jacqueline Kulczyk Golebiewski
Mary Ann Kudla Hargrave
Amy Catherine Johnson
Carol Jolley Kent
Christine Kedzierski Kirsch
Joan Johnston Kostusiak
Mary Volker Kotansky
Jacqueline Kurzanski Lesniewski
Maureen McCarville Lewis
Helen Schnacky Lindley
Marianne McKinley Michaud
Kathleen Moisiejewicz
Karen C. Murphy
Maureen O'Connell
M. Patricia Kingston O'Hara
David and Kathleen Lynch Piper
Mary Katherine Woods Posluszny
Judith Rauls
Janet Marriott Rebhan
Mary Lea Rivet
Julie Jewert Roach
Mary Sadewater
Dr. Judith Grace Schiffert
Janet Walters Shipley
Diane Kirchgraber Smith
Joan Spencer
Mary Boggan Stephen
Linda Kane Stievater
Christine Stravino
Mary Ann Pankiewicz Szarmach
Geraldine Florek Wiess
Joanne Marciano Winkler

CLASS OF '64

Kathleen Hensler Albertson
Lois I. Bernbeck
Barbara Brady Brown
Mary Anne Casey
Kathleen Dolan Clements
Dr. Kathleen Connor
M. Patricia O'Donnell Crane
Mary Rider Crone
Melissa Gray Crystal
Patricia Woods Daigler
Maureen Walsh Dougherty
Linda June Drajem Ph.D.
Dina Payne Dugan
Elaine O'Gorek Ehmann
Helen Blake Esford
Marilyn Ryan Farmer
Rose Payssa Furman
Elizabeth Slaga Gluck
Kathleen M. Hurley
Graceann Bartello Johnson
Judith Stiller Kemmer
Anne Adolf Lovett

D'Youville

Joan Cox McCaffrey
 Carol Lyons Montante
 Barbara Weber Nicosia
 Joan Morton O'Neill
 Claire Hughes Powers
 Elaine Juliano Regan
 Marcia Whelehan Reynders
 Mary Lake Riley
 Carol Kosinski Riniolo
 Arleen Bevilacqua Rudell
 Elizabeth Frick Ryan
 Sara Magher Schoetz
 Kathleen M. Slayton Ed.D.
 Barbara Harrity Smith
 Rosalie Vicario Sperrazza
 Margaret Curran Stroman
 Barbara Bergler Walleshauser
 Elizabeth Giermata Weiss
 Sharon Robinson Wheat
 Mary Mason Winograd
 Patricia Wagner Woods
 Pollyanna Radley Zinck

CLASS OF '65

Linda Maxwell Allen
 Ann Stephens Brady
 Margaret Murphy Breimayer
 Joan O'Grady Brown
 Patricia Buck Bruschi
 Marianne Maggioli Cervený
 Karen Cherry
 Mary Jane Christine Cryan
 Marilyn Bienen Davies
 Jeanne Mastin Dibble
 Mary Dougherty Elias
 Victoria Riley Ficco-Panzer
 Nancy Catherine Findlay
 Judith Chaney Frey
 Carol Ruth Glaeser
 Joanne Bredenberg Gordon
 Diane Lindenmeier Green
 Mary Garvey Heflich
 Rosemary P. Holmberg
 Margaret Crotty Kelly
 Sheila Ann Kelly
 Kathleen Ann Klocke
 Stella Vona Kohn
 Kathleen Arganbright Koon
 Mary Beth Sorbello Krolik
 Dr. Ruth Schmidle Lavin
 Monica Cosgrove Lazarus
 Nancy Marschner Lee
 Elizabeth M. Mahony
 Mary Jane MacKinnon McCool
 Kate Glass McDermott-Mahon
 Marilyn McGee
 Jerilyn Kunz McGivern
 Gail MacKenzie Michalak
 Bonne Tymorski Mogulescu PhD
 Diane Audrey Palmeri
 Beverly Kossin Polito

Anita Saia Quinn
 Mary Alice McCormick Robertson
 M. Penelope Russell
 Sallie Kosinski Sandstrom
 Mary Mahoney Scheeler
 Bonnie Zboch Schneider
 Joyce Polizzi Seegel
 Donna Wilson Seymour
 Marie Cosgrove Shea
 Catherine Woeppel Sheedy
 Patricia Marino Smyton
 Cathleen Curran Snyder
 Julie Werth Staglano
 Elaine Molenda Szulewski
 Mary Jackson Thomas
 Judith Jarnot Travers
 Sarah Januale Treanor
 M. Katherine Lang Verso
 Maria Halicki Walczak
 Jean Cunningham Ward
 Veronica Shannon Wingen
 Bette Frascella Wolf
 Maria Janoszyk Woloszyn
 Phyllis Wray
 Linda Joyce Yarr
 Joanne Kajdan Zieziula

CLASS OF '66

Madeline Tryon Augustine
 Patricia Balcerzak
 Mary Kiefer Beals
 Alice Blake-Stalker
 Elizabeth Capron Bloom-Dunn
 Suzanne Kovarovic Bomar
 Mary Fritzen Bonner
 Barbara Noeller Brown
 Regina Garey Burke
 Sr. Rose Mary Cauley GNSH †
 Rita Colicchia
 Natalie Yankowski Collins
 Monica Marzolf Cosgrove
 Linda Ramich Costello
 Eileen Cregg
 Margaret King Downey *
 Elsa Haas Durichek
 Elizabeth Isel Durr
 Mary Cooper Fitzpatrick
 Maria Suffoletta Gomlak
 Joanne Lodick Haley
 JoAnn Tymorski Hess
 Elizabeth Malecki Horrigan
 Fern Butt Isaacson
 Dorothy Dodman Kelleher
 Mary Reilly Keysa
 Kathryn Ann Kohler
 Frances Lombardo Kraus
 Carol and Frank Lazarus
 Mary Lytle Luch
 Mary McDonald Mascott
 Ann Loughlin Mockler
 Sue Ann Fitzgerald Phillipp

Joanne J. Privitera
 Rita M. Riley
 Grace Rizzo Risetto
 Elaine Zielinski Roberts
 Anne Marie Pope Rozek
 Janice Pritchard Scammell
 Virginia Baron Schenzinger
 M. Patricia Cullen Shanks
 Barbara Breier St. Onge
 Loretta Harrity Sypyt
 Suzanne Woodward Szustakowski
 Diane Janusz Tardibuono
 Patricia Skimin Touchette
 Kathleen Manley Ucci
 Janet Kroff Wiehle-Amond

CLASS OF '67

Margaret B. Bartolotti
 Patricia Smering Battaglia
 Maureen Carroll Bender
 Col. Jane Anne Bigelow (Ret.)
 Angela Scime Bizek
 Carolyn Petersen Bongi
 Virginia Daly Briand
 Mary Berg Butler
 Patricia Zeitz Cady
 Salvatrice LoFaso Cramer
 Kathleen Mary Daley
 A. Sharon Deehan
 Patricia Pantera Di Sessa
 Annette Wozniak Doktor
 Christina Barth Eberl
 Mary Ann Repicky Emanuele
 Elizabeth Sullivan Fuhrmann
 Jeanne Marie Glair
 Alicia Herrera Gutierrez
 Diane M. Kaczmarek
 Sonia Gembalski Kelly
 Sister Mary Karen Kelly GNSH
 Bonnie Bernhardt Knoke
 Kenneth Keenan Koessler
 Elizabeth Schmit Kooshoian
 Kathleen Mary Kreis
 Theresa Cosgrove Laslo
 Dr. Susan Lavin
 Kathryn Cala Melson
 Josephine Chella Mulvihill
 Marjorie Hofbauer Pastalaniec
 Christine Collins Pattantyus *
 Joan Phelps Prem
 Rita Bowen Rivers
 Sister Denise A. Roche GNSH
 Cordelia Robinson Rosenberg
 Lorraine Drzymata Rybak
 Lu Ann Scalisi
 Catherine Powers Schwalenstocker
 Louise Ellen Seereiter
 Peggy (Pixie) Sloan
 Joan Kolkmeier Speck
 Karen Matus Stalker
 Linda Farinelli Stanek

Florence Kalenik Stapleton
 Maryellen Quinn Thirolf
 Barbara Waligora-Serafin
 Lucille Calabrese Watford
 Margaret Wright Weinholtz
 Marilyn Welch
 Mary Kittle Williams
 Shirley Gerwitz Zahm
 Louise Knorr Zoladz

CLASS OF '68

Nancy Clement Ansteth
 Barbara Rauber Arnault
 Linda Young Beardi
 Mary Ward Berkman
 Annette Boies-Lobl
 Susan O'Donnell Brady
 Lynn O'Connell Brennan
 Maureen O'Brien Canavan
 Maureen Benton Colonell
 Mary Ann Crotty-Logue
 Maureen Purcell Diggins
 Marilyn Peer Duffy
 Judith Slon Dzierba
 Eileen Eagan
 Elizabeth Short Grady
 Sheila Bleab Jacobs
 Shirley McPartland Jeter
 Mary Wilson Kennedy
 Celine Dumont La Duca
 Carolyn Wasielewski
 Carol Steen Leonard
 Joan Condrón Lesch RN
 Eileen Lewis
 Genevieve Lindenfeld
 Patricia Brauch Lombardi
 Kathleen Manns
 Marilyn Marzolf
 Carol Nelson McCrea
 Louise DeSpirt McGrath
 Julia Dillon Miller
 Sue Ann Leman Miller
 Lois Dolan Needham
 Margaret Hagerty Pierce
 Virginia Cowan Pierce
 Kathleen Kanaley Prem
 Bernadette Rossi Romeo
 Jeanne Orrange Schenk
 Maureen McPartland Sumera
 Mary O'Byrne Taberski
 Beverly Raczynski Tomasi
 Lorraine Bucki Wianeck
 Margaret Roche Wietig
 Barbara Ursano Woods
 Patricia Wrobel

CLASS OF '69

Kathryn Cuccia Alessi
 Marcia Bosinski Andrews
 Nancy Kirwan Archdekin
 Marguerite Childs Aube

Leslie Menz Ball
Christine Nikonowicz Batley
Gail Fassel Baumgarten
Charlotte McDonald Beagle
Patricia Herbst Burke
Louisa J. Buscaglia
Anthony and Jean Bisantz Caldiero
Barbara Thorpe Cartee
Marianne Chimento
Suzanne Jones Connelly
Kathleen Kane Crowe
Susan Jolley Csizmar
Nora K. Curtin
Shannon Dillon Duggan
Rita Winiecki Dykstra
Nancy Bruckel Elliot
Deborah Croff Foltz
Cheryl Sutherland Fries
Marilyn Lalley Fritz
Jacquelyn H. Gailor
Martha Gonter Gaustad PhD
Jennifer Hallock German
Mary B. Greeley
Colette M. Hall
Elizabeth Westermeier Hossenlopp
Anne Sheeran Jakubowski
Janet Blonsky Jenkins
Mary Wehrfritz Johnson
Melody Kaczmarek
Christine Morey Kalish
Irene Dillon Kelly
Margaret Aldrich King
Karen Wollert Kline
Cecelia Scuto Kohlmeier
Elaine Roszak Kopecky
Jean Curtin Lalor
Susan Wagner Lennon
Paula Dumont Leonard
Marilyn Ripley Lilly
Sister Donna M. Lord GNSH
Mary Adesso Macdonald
Kathleen Shea Mackinnon
Barbara J. Malinowski
Mary Hoffman Maurer
Nora Newman May
Sally Kordenbrock May
Dorothy Higgins McNicholas
Karen Williams Moran
Jean Flynn Murray
Kathryn Butler Murrer
Ann Neale
Mary Ann Nelson
Mary Kay Gamble Otterson
Christine Palczewski
Thora Blackwood Perkins
Bernadette Jordan Pursel
Sandra R. Putnam
Kathleen Ryan Reilly
Susan Duggan Rimlinger
Paula Hogenkamp Robertson
Jean Woodward Roeder †

Irene P. Rozmus
Kathleen Twist Sartini
Joyce Bernard Seymour
Paula DiNunzio Sharp
Kathleen Ganley Sheehan
Judith Trapper Siegert
Ellen Siller
Anna Mae Sokusky
Sister Sheila A. Stone GNSH
Janice Ott Streit
Cathie Swafford
Margaret Townsend
Nancy A. Vanderlinde
Lorraine Kohlmann Weiner RN
Audrey Heimink Whalen
Susan E. White
Katherine Ernst Wirges
Sandra Palczewski Young
Patricia Riedel Youngberg
Gloria Solecki Zieziula

CLASS OF '70

Theresa Kovacic Barbosky
Carol Grace Beckman
Mary Bernadt Benz
Patricia Sweeney Boland
Maureen Crane Bowers
Barbara Sizemore Brossard
Mary F. Callaghan
Susan Donnelly Cavanaugh
Kathryn Eaton Childs
Victoria A. Christopher
Patricia Comerford-Haley
Mary Judith Calandra Cremeno
Elizabeth Drescher Duzen
Dorothy Rubritz Ellis
Michelle Bobseine Emerling
Suzanne Soplop Finn
Diane Parisi Finocchiaro
Genevieve Geibel Fitzgerald
Kathleen Meyer Forbrich *
Mary Grace Scott Frank
Margaret Frazier-Plodzick
Patricia B. Frey
Mary Dawson Furnanz
Ellen Coughlin Gaughan
Dr. Marcia Kulpa Gellin
Helen Gibney-Dubinsky
Stephanie Irwin Gregorie
Sheila Heapes
Pamela Putnam Hirons B.S.N.
Sharon Danahy Hoffstetter
Sharyan Schmitt Hohensee
Ann Flynn Holler NC, USN (Ret.)
Maryanne Quatrano Holleran
Marie L. Horn
Mary Gucwa Illig
Paula Bouchard Jacques
Angela Sorrento Jada
Kathryn Coyne Janz
Kathleen McFadden Kasprzak PhD

Lois Waterman Kibler
Maureen Reed Killeen
Mary Ellen Kunz
Nancy Sprague Leed
Denise O'Connor Mansfield
Anastasia Ilkiwskyj Marc
Cynthia Matczuk Mattioli
Kathleen Amicone McCarthy
Elizabeth Byron McGowan *
Marian Iacona McGowan
Barbara A. Micare
Carole F. Moore
Norine McQuillen Morgenfeld
Mary Ellen Moriarty
Florence Fisher Neary
Helen Newman
Suzanne Lawley Nyitrai
Anne-Marie O'Connor
Donna Fisselbrand Owen
Patricia Fliss Pawlowski
Dolores Gaeta Prezyna
Suzanne Taylor Robilotta
Sandra Niemczyk Roderick
Beverly Mudd Ronald
Nancy Campiere Savarino
Thelma "Pat" Brennan Schofield
Anne Hogenkamp Sellers
Cathy Shelton
Mary Elaine Henning Spitzer
Rose Lachina Stern
Margaret Cosgrove Stiglianese
Diana Azzi Torregrossa
Mary Lou Privitera Tringali PhD
Kathleen Gibbons Troicke
Sheila Rafter Webster
Barbara Rainville Wood
Barbara O'Brien Wright
Lana Clinton Zahn

CLASS OF '71

Mary Louise Ptaszkiewicz Albert
Joan Stahl Ast
Jane Marzolf Balbick
Sara Cronin Beckley
Ann Duggan Bratthauer
Mary Browne Bruning
Eileen Brobson Cape
Maureen A. Carter
Susan Lynch Casement
Roberta Theeman Casey
Mary DiPasquale Christian
Patricia Donlon Condon
Ann S. Czapl
Virginia Johnson Dachenhausen
Dorothy Kazukiewicz Deavers
Linda R. Dixon-Muscarella
Eileen Tubridy Drinkwater
Margaret Donahue Ducayet
Martha Ann Duffy
Joan Heidinger Dulak
Daniel Fish

Patricia Kachinoski Fitzpatrick
Diane Ciminelli Geerken
Leticia La Grandier Gonzalez
Joan M. Hall
Joan Buchbinder Heffron
Margaret Bremer Heiss
Carol Polito Hertel
Eileen Sullivan Holzhauer
Jeanne Capodagli Janicki
Angela Barrile Jones
Clarann Kross Josef
Patricia Maslyn Kohler
Pierra Bonora Korves
Joan Jankowiak Kozina
Sister Jean Marie Liston GNSH
Ann Marie LoFaso
Sister Mary Elizabeth Looby GNSH
Christine Lubelski
Grace Cosgrove Martorana
Elizabeth Bona McGoogan
Elana Mallick Michenzi
Janice Schwandt Molfese
Mary Lynn Murrett
Cheryl Hettler Noetscher
Eileen O'Brien-Cardona
Patricia Matthews O'Bryan
Vincenetta Ventresca O'Donnell
Catharine Guard Olsen
Margaret Cain Price
Susan McAllister Quinn
Honora Starkey Reger
Mary Sturm Robida
Carol Ann Ryan
Kathleen E. Scanlon
Mary Sellers-Pici
Rosemarie Novosel Sniezyk
Mary Hennigan Soehner
Irene Curro Stevens
Patricia Bucki Sullivan
Susan Martin Sullivan
Patricia Herbst Telesco
Margaret Kraszewski Umhauer
Christine McMahon Vogelsang
Margaret Theobald Walker
Dorette Sugg Welk PhD
Elizabeth DeFino Wilson
Susan Larkin Wisniewski

CLASS OF '72

Ann M. Andel
Susan Young Ballard
Joyce Barbalato
Ilene Pisarek Braun
Carolyn Kulinski Brooks
Maureen Cahill
Christine Twarog Chipp
Jo Ellen Perrigo Cronin
Mary M. DeLaney
Mary E. Dillon
Maureen Driscoll-Hudack
Barbara Mary Filipiak

D'Youville

Mary E. Flanagan
Linda Whelan Furlani
Kathleen Larson Gallagher
Janice McNicholas Garrett
Elizabeth Sullivan Gawronski
Virginia Gebus
Kathleen Sullivan Gold
Barbara McGrath Gorga
Mattia Falcone Greno
Kathleen Hadrych-Ross
Barbara Hurewitz Hankin
Gertrude Johnston
Mary Hurley Kirst
Mary Lambert
Patricia Lanthier
Susan Barnes Lindner
Brenda Campbell Matthews
Patricia O'Neill McCabe
Theresa Mago McClure
Patricia McMahon
Judith Ann Moran-Peters
Eileen Rubenstein Mullaney
Eileen Termer Oberg
Mary McGeever Pherson
Kathleen Joyce Seitz
Mary Ellen Smith
Barbara Ormond Snyder
Sheila Harritty Starkey
Catherine Durkin Sullivan
Eleanor Smith Wall
Cleo Newton Watkins
Caryn Wojtowicz
Camille Spruch Worley

CLASS OF '73

Pamela Allison
Deirdre Mary Bastible
Margaret Bishop Borchard
Janine Sagar Botty
Catherine M. Braniecki *
Rebecca Byrd
Jane Devine Corbelli
Sandra Kolasz Dale
Eileen Dawson
Denise Borowiak De Nisco
Marguerite Bacigalupo Dennis
Mary McGrath Devine
Lola May Ellison
Rita M. Farrell
Mary Beth Hess Farruggio
Kathryn Wilbert Gorkiewicz
Mary Furlong Hanzly
Mary O'Leary Hurley
Jean Rice Jain
Sharon Meyer James
Theresa Pytel Joyce
Mary Malay Keeney
Eileen McCafferty Koolpe
Sister Julia C. Lanigan GNSH
Patricia G. Long
Barbara Davis Makarewicz

Ann McCormick-McQuillan
Julia White Miller
Rosemary B. Mogavero
Janice Weaver Moran
Linda Jacob Neri
Jo Ann Johnson Peet
Sally Domroes Piscotty
Patricia Keane Polowy
MaryEllen Burke Roszkowski
Martha Haar Ryan
Paula Bickford Sanan
Alice Sirna Schenkel RN
Sister Mary Ann Schimscheiner RSM
Kathleen Hassett Seibel
Ruth Raynak Shatzel
Janet L. Smith
Karen Justinger Smith
Nancy Devine Stabel
Marianne Florek Vidal
Geraldine E. Westwood
Ellen Lagonegro Wierzbieniec
Donna Hauser Wójcik

CLASS OF '74

Anne Capacci Andrews
Jane McDonnell Auker
Sister Marita Campbell GNSH
Sheila Bohen Cannon
Annette Belpulsi Cerrone
Christine Stephan Ciminelli
Kathleen Culbert Doering
Julia Morrow Frawley
Christine Kolakowski Gaume
Sister Elizabeth D. Gear GNSH
Christian Sauerbier Gee
Carol Hoefen Greisberger
Maureen Eagleton Healy
Lisa Hicks
Marilyn O'Hara Howe
Paula Munich Karney
Barbara A. Knorr
Susan Lynne Korytkowski
Kathleen Smith Laudisio
Mary Hoban Long
Frances Manuele Magyar
Ellyn Fay Maloney
Martin A. Mann
Janet Gerdelman Marchetta
Nancy Stuhler McMahon
Germaine Merrill
Mary Monnat
Kathleen Cerza Owens
Mary Ann Perry
Dennis A. Pines
Judith Po-Chedley Wilkins
Maureen Crowley Riley
Janet A. Schachner
Betty J. Schultz
Rose Galletti Secretan
Olivia Lovullo Simpson
Marcia Szymanski Smith

Karen Kelley Sparkes
Josephine Castelli Szlyk
Ann Todd Talley
Margaret Conway Tim
Judith Winner Tuori
Kathleen Navarro Twist
Theresa Groth Wellenzohn
Cheryl M. Whitman

CLASS OF '75

Corinne Brawn Averill
Mary Birchmeyer Barsema
Liane Turski Browning
Deborah Bruch Bucki
Mary Jo Ciaccia
Michele A. Cook MD
Denise Cousins Cuneo
Sister Donna Del Santo SSJ
Mary Jo Holland Eichner *
Janice Crane Forsyth
Carolann Kratz Galbreath
Marie Gebhard Goins
Patricia Di Lillo Gowen
Regina Senko Hanchak
Mary Meincke Heider
Patricia Hughes Dabrowski
Madonna Kelly
Ellen Maier Ketter
Marie Urbaniak Lader
Mary Leddy
Cheryl Myles Malzan
Nancy Graves Manalio
Kay Congdon Marciano
Madonna Bavisotto McClain
Mary Elizabeth McCourt
Elizabeth Kluss Messner
Douglas Moffat MD
Mary Wesley Neward
Laura Shehan Norwood
Dolores M. Palczewski
Julie M. Roebuck
Sheila Collins Rosowicz
Joseph Schmid
Pamela Harrington Schmid †
Diane Liddle Short
Sheila M. Sloan
Alexandra Matecki Spencer
Laurie Sweeney
Kathy Meagher Todtenhagen
Christine Gooch Viapiano
Jane Murphy Wilburne EdD

CLASS OF '76

Elsa Barilec
Mark and Charlene McNamara Barnes
Mary O'Dowd Beltrami
Susan Pfohl Cirbus
Dorothy House
Margaret Gilhooley Marino
Judith Wade McFadden
Judith Ann Nocek-Genung

Leslie Ann Palm-Schwartz
Jane Lyons Patterson *
Richard C. Schaefer
Victoria J. Shepardson
Mary Ann Schieder Skinner
Donna Blaird Wagner

CLASS OF '77

Theresa Vella Agostinelli
Suzanne Perez Andelora
Michele Gullo Arcara
Martha Scott Barnas
Judy Carr Beecher †
Mary Lou Manzo Bodziak
Ann Woodward Canty
Ann Cowan Carroll
Valerie Graser Cashin
Philomene Kosmoski Cudzilo
Kathleen Barrett Dinkel
Michael Fallacaro MD
Nadine Panigutti Fallacaro
Michael Hoban
Debra Nowak Kasper
Nancy Nuwer Konstantinides
Susan Andol Lee
Susan Fenelon Magnotti
Linda Martin Makey
Mary Ellen Stencik Manfred
Ronald Matthews
Paula M. Mazur MD
Lucy McLaughlin
Stephen Mercurio
Martha Sauerbier Parker
Daria L. Petrilli-Eckert
Kathleen Kay Plyter
Margaret Maloney Sander
Catherine Finn Sardo
Lucia L. Scarpino
Margaret Twist Spadinger
Theresa Gillooly Speers
Maureen O'Brien Sullivan
Karen Feld Teplitsky
Deirdre Sullivan Tomasello
Lynn Wysochanski Walsh
Carol-Lynn Markowski Winship
Judith Fredericks Wisenbaker
Helen Bodkin Zuelzer

CLASS OF '78

Anne Chmura Anthon
Susan Walek Bergantz
Sumedha Pandit Bhagat
Kathleen Cosgrove-Drury
William Delaney
Margaret Gannon
Marjorie Godfrey
Eileen Hanley-Noworyta
Carolyn Holder
Linda Dawkins Jenkins
Maryjean Kraengel
Rosemary Kuca-Hagerty

Michele Woyshner Mach
David J. Mohr
Barbara Bowie Montante
Anne Cameron Swantz
James Viapiano MD
Mary Curry Viapiano
Jeanne Dumont Wholey
Justine E. Ziemba

CLASS OF '79

Annmarie Brisk Byers
Nina Frenning Caffarelli
Marie Caruana Crofoot
Lawrence J. Cudek
Elizabeth Egan
Rebecca Hallinan Fueger
Mary Pat Furey
Cheryl Newell Goodridge
Colleen Thornbury Gray
Camille M. Hubert
Pamela Kasprzak Kiely
Maria B. Lapaglia
Joan Kwarciak Leising
Laura Hartmann Lincoln
Patricia Ruehmann Manolis
Mary Fronczak Mcspadden
Carey MacBrayer Nelson
Chinwe Zino Okereke
Francine Magyar O'Mara
Mary Leach O'Shea
Helen Johnson Pearlman
Anita Louise Polizzi
Harb Rank
Mary Beth Wallenhorst Rank
Monica Johnson Sleep
MaryBeth Gooch Thompsett

CLASS OF '80

Lauren B. Altieri
Kerry Broderick M.D.
Constance Carroll Cahill
Mark T. Cappello
Jennifer Soplop Christiansen
Richard Cudzilo
Patricia Gullo Del Principe
Nancy Conrad Deubell
Joan M. Dunbar
Claudia Faso
Callista T. Garrabrant
Kathleen Emerson Groves
Nancy E. Hackett
Kathleen E. Hunter
Michele Quadrini Kuznitz RN
Judith Linde LeFevre
Ann E. Lewis-Wiertel
Joyce Kontrabecki Markiewicz
Mary Smith McCarthy
Kathleen Dietl McGinn
Kathleen Sterben Meyer
Marianne Koch O'Brien

Barbara Agro Paige
Peter F. Pasieka
Karen A. Penyin
Nadine Gumulak Pfeiffer
Cheryl Bremer Robinson
Eugenio Russi
Sandra Genice Smith
Janice M. Thape
Kathleen Manley Thorp
Barbara Klimek Yoviene

CLASS OF '81

Michele Marie Ambor-Hutz
Susan Baker-Kroczyński
Catherine Ahl Beal
Barbara Gillings Benz *
Mary Gabrysowski Burgio
Caren Schaefer Churpita RN
Diane Wilkinson Di Francisco
Dianne Feeney
Debra Reiner Gehan
Julie Weinheimer Gemerek
Catherine D'Arcy Heeb
James Hetzler
Mary Lufkin Huczel
Donna Wagner Jackson
Patrick R. Janiga
Mary Elizabeth Jurca
Pamela M. Krawczyk-Greene
William LaMagna
Ann Weiner Masse
Kathleen F. McCauley
Edward P. McHugh
Pamela Smith Miller
Linda Bilowus Moretti
Robert Page Pawlak
Sally Conschaffer Porter
Lauren Towkacz Poveromo
Denise Dole Schiener
Pamela Sheehan Schreck
Linda Lorber Schwab
Patricia Granelli Tonno
Anthony G. Wiertel

CLASS OF '82

William Lonnie Blake
Christine Bracco
Kathleen S. Case-Simoncelli
Deborah Pellegrino Dewey
Megan Lachaal Farrell MD
Judith McCooley Hotnich
Maureen Naioti Jandrisevits *
Deborah Kim Jessey
Joseph Marinaccio
Lynne T. Muth
Mark A. Nehls
Patricia R. Palma
Kathleen Hulbert Palmer
Richard E. Pawlak
Barbara Lee Rhee
Linda McKie Siegel

Karen Lucas Thomas
Jo Ann Bartus Timkey
Jeannette Manno Turner
Margaret M. Wilber
Jo Nonnengard Wilkes
Carole Brunetto Woomer

CLASS OF '83

Constance O'Mara Butler
Mary Deveau Berry
Sheri A. Egeli
Dalena Heitz Franklin
Karen Nimon Freedman
James R. Hewitt
Janice Bogdan Kozakiewicz
Lorraine Miller Lopez PMH NP-BC
Margaret Bernat Murray
Elaine G. Pond
Gail Rogers
Sharon Ross
Raul Russi
Margaret Schlotterbeck
Patricia Koch Schmidt
Nelson G. Scott
Cindy Ann Switzer
Nancy Rung Walsh
Karen Ziemianski

CLASS OF '84

Laurie Tomani Alexander
Therese Ford Anderson
Jennifer Cecelia Batt
Drew J. Cerza
Fay C. Chelmow
Stephen M. Dziak
Nancy Foster CFE
Cynthia Palenski Gibson NP
Kathleen Powers Guarino
Laurie A. Hall
Heidi Zobel Kasper
Patricia Lavelle LaMagna
Irene A. Majchrzak
Canio Marasco
Mary Beth Pfeiffer
Ann Marie Athans Quinn
Robert A. Ritchie
Dawn Doyle Scott
Virginia Heimink Stramaglia
Elizabeth Kamm Stuart
Cynthia A. Childs Taylor
Lori Peck Tyrrell
Maureen S. Wailand

CLASS OF '85

Gina Giacomoni Bennett
A. Laurie Koessler Brosnahan
Faye Contino
Linda S. Ermer
Paul Fasanello
Kelly Johnson Jacobius *
Maryann Losi Koerner

Janet E. Madden
Suzanne MacDavid Monczynski
John Myers
Pamela Vanfossen Nixa
Laurie Pinkerton Para
Jacqueline Strozzyk
Peter A. Van Dyke
Cheryl Wilder

CLASS OF '86

Mary Andolsek
Linda Sesnie Berard
Allan L. Cecchini
Elizabeth Heubusch Connolly
Donna Charvat Enders
Lisa Griesmann Hastings
Roseann Rossi Izquierdo
Theresa M. Makson
Mary Hunter Montero
Marion Pace Olivieri *
Thomas E. Parzymieso
Laura Bernard Sherman
Marion D. Slaughter
Joan Kostek Vetter

CLASS OF '87

Adolphus Allen
Judith Brown-Reifsteck
Dianne Hartley Caputi
Joseph Cavallaro
Ann Hoffman Grifasi
Lisa Loguidice Hixson
Maureen Walsh Koricke
Susan Roth Mancuso
Cheryl A. Miller
Joan Kurtz Osswald
Elizabeth A. Reiser
Susan Sadowski
Joseph M. Saltal
Victor Paul Thines
Laura Fudala Thompson

CLASS OF '88

Teresa Cacciatore
Paul Cheteny
Gina Cotroneo Conciardo
Tracy Holderness Corbran
Amy Martin Gusek
Darryl R. Hart
Helen M. Jones
Renee Fancher Loftus
Beth Osborne Moses
Cory Nicholls Shaffer
Shelley Barreno Steeprook
Jacqueline Weigle

CLASS OF '89

Rosalind Davis Blackshear
Kathryn E. Booth
James Corbran
Jodene Vrana Cunningham

D'Youville

Rosemary Andrews Gillen
M. Ruth Reilly Kelly PhD
Mary Jane Key
Patrick L. Murphy
Linda Scott
Karla Simmeth Sherwood

CLASS OF '90

Joanne Q. Chmura
Johnna Hermann Hyde
Brian Shawn McKenzie
Joey Lucca Punturiero
Assunta Campanile Ventresca
Kathleen VonVreckin
Anson Kwame Wurapa

CLASS OF '91

Deirdre Stewart Baksh
Margaret Arnone Kinsella
David Kresse
Jeannette Ann Lesinski
Marshalle Martin
Leanne Smielecki
Gary R. Stillman
Kenneth J. Stuczynski

CLASS OF '92

Maria Spano Baron
Anthony Denson
Jeff Hyde
John Patrick Stone
Ronald White
Kathleen Anastasi Wilson
Todd Paul

CLASS OF '93

David A. Bluett
Ann Elford
Jacqueline G. Haas
Kathleen Weissberg

CLASS OF '94

Suzanne Singerman Albert
Sheryl Howard Bates
Judith Gamel Clark
Mary Denise Mahoney Dunford
Rosemarie Sheehan McHugh
Christopher Nugent
Beth Huenniger Salzmann
Wendy Davis Swick

CLASS OF '95

Maura Campbell Clune
Heather Sibley Ferro
Mark Jans
Leslie C. Krentz
Olga Semple
Jacquelyn D. Smuda
Philip J. Thompson
Gregory Wachowiak
Kathryn Franzek Woeber
Omiros Zambigadis

CLASS OF '96

Donna M. Brzykcy
Andrew F. Case
Carolynne Cronin
Laura Casimino Grable
Heather A. Javaherian-Dysinger
Michelle Warner

CLASS OF '97

Tracy Bentley Bentley-Root
Annmarie Bracci
Buffie La Gasse Brothers
Ian and Susan Hornung Brown
Dr. Maureen F. Finney
Thomas Milano
Mary Margaret Nowak
Lucy Polizzi Pencille
Joseph M. Przybyla
Christine Verni
Veronica D. Williams

CLASS OF '98

Susan Brown
Mary Dunham Burgess
Jill Carnes
Jennifer Christy
Mary C. Damiano
Kathryn Mullen Daniels
Robert F. Hynes
Sara Orton Leddy
Kristine Dejneka McCarthy
Ty McCarthy
Michelle Denise Seay
Susan Snyder
James John Weidel

CLASS OF '99

Alison Galie Broadbent
James Joseph Connors
Scott R. Dobe DPT
Marguerite M. Fonseca
David J. Gerbracht
Timothy M. Kennedy
Jeannine McInnis
Mary L. Przybyla
Francis T. Riforgiato
Brianne McGrady Sisco
Ruth Taylor
Veronica J. Williams-Goden
Katie L. Wrest-Connors DPT

CLASS OF '00

Scott Earl Clark
Colleen Elizabeth Corcoran
Lynda Deitchle
Mary Gannon
Carol A. Milazzo
Maryann O'Brien
Sonalee M. Patel
Eugene L. Pohancsek

CLASS OF '01

Jeffery Agan
Haithem Ben Jaballah
Timothy Crowe
Laura Gentner DiGiulio
Maureen C. Feeley
Sandra Pottynski Gibson
Timothy B. Gorny
Mark O. Okafor
Cheryl L. Saramak
Michael Fredrick Swartz

CLASS OF '02

Erin Canale Agan
Keith A. Bailey
Sonia Ayadi Ben Jaballah
Frank S. Ginnetti
Edward S. Kowalewski
Margaret Mary Meissner
Aime Rizzuto

CLASS OF '03

Sharon Davis
Dr. Bina N. Desai
Laura Louise Eisenzopf DPT
Dr. Mary Eder
Patricia Ann Laing
Lisa Ann Lavrey DPT
Michele Mitchell
Carrie A. Morski
Rosemary Petti-Schaner
Sharon Rose Roth
Elaine Rose Rubal
Melissa A. Stiles

CLASS OF '04

Heather Lynn Bailey
Ann M. DiChristina
John K. Grandy
Kathryn Mary Knisely
Julie M. Marinaccio †
Jackie L. Otis
Linda M. Russo
Candice Lorena Schultz
Dr. Theresa A. Vallone
Linda S. Weisenborn

CLASS OF '05

Stefania Fynn-Aikins
Kathleen Leonard
Ryan Miller
Loreto Jooee Osorio
Vertina Marie Rhim
Leticia Lowery Russi-Shareno
Lindsay Olsen Smith

CLASS OF '06

Daniel Browne
Marie Czarnota
Jeffrey Daoust
Andrew Dunn

Dr. Bethany C. Dunn
Jennifer Rebecca Ministero
Eleanor Bridget Nixon
Robert M. Nosek
Jacqueline M. Pappas
Sandhyaben S. Parikh
Sarah P. Pictor
Anna M. Roberts
Carolina Rotondo
Patrizio Stanziano
Kathryn A. Tiutiunnyk

CLASS OF '07

Pam Bartlo
John R. Bianchi
Michael J. Bubar
Crystal M. Crossett
Bonnie Fox-Garrity EdD
Khuyet T. Le
William Joseph Mariani EdD †
Michelle D. McCarthy
Ericka D. Morley-Soto
Michelle Mounteney
Mary Tomasello O'Sullivan
Kyle Ward
Leanna E. Weinert-Watson

CLASS OF '08

Paula Barblock
Laurie Bauch
Jessica K. Lyons
Lauren N. Martin
Susan A. McClure
Jacquelyn Gooslin Milbrand
Keith Mondschein
Dr. Ashley N. Newbury
Keren Shavit-Buckley

CLASS OF '09

Keila Y. Aguglia
Kelly Biehls
Susan M. Eddy
Caroline B. Farrell Scieski
Austin Houlding
Michele Nanni
Lucinda Hill Phillips
Kyle W. Trimble
Laraine M. Wende

CLASS OF '10

Lynn A. Brant
Kristina Buran
Michelle Darby-Strelieff
Lisa Morog Dio
Melissa C. Gambini
Christina M. Joyce
Aimee S. Larson
Melissa Lindner
Susan Zorfas McLanahan
Jordan Nigro
Taylor F. Wolin

SCHOLARSHIP FUNDS

CLASS OF '11

Andrea Anderson Addison
Alyssa C. Cometto
Joshua Cozzo
Daniel J. Glover
Erin McCarthy Hanaburgh
Richard L. Hanaburgh
Adam Huczel
Lee Moretti Jasinski
Michele Karnes
Marvyn A. Mahle
Melissa A. Marguccio
Nicole M. Miller
Melissa Mule
Catherine Muth
Danielle N. Panza
Deanna M. Rusek
Rebecca A. Sewastynowicz
Jennifer Vincent

CLASS OF '12

Stephanie Atti
Sharon Benz
Ann P. Caughill
Albert Coreno
Richard Coster
Leah Gorski
Andrea L. Herold
Tamara Higgins-Cain
Kevin C. Jenney
Sylvia M. Keister
Gabrielle A. Lathrop
Randal Napierala
Todd Potter Jr.
Ashley Sajdak
Eury Santana
Kaitlynn M. Trzaska
Tylor R. Vaillancourt
Matthew Ryan Veronica
Kimberly Vetter
Jordan Vokes

CLASS OF '13

Brenda Passow Chadwick
Emily Cheung
Lauren Ciurzynski
Laura Cipriani Franklin
Ronald E. Fugate
Peter Gruen
Takao Hattori
Adam Klarowski
Laura Klopp
Christopher Krueger
Kaitlin Maxwell
Justus Ndyamukama
Luciana Payne
Verneice Bromell Smiley-Delahanty
Nga Truong

CLASS OF '14

Mah-Rukh Anjum
Patrick D. Barber
Shawn Campbell
Robert James Dean
Laura E. Dombkowski
Erica C. Fitzgerald
Christopher Flores
Michael Fraser
Maria Fusco
Caitlin Loftus
Claire T. McGuire
JuMan Park
Dolores Gaeta Prezyna
Countess J. Richards
Matthew Smith
Jeffrey P. Spors
James P. Thore

CLASS OF '15

Jolynn Becker
Courtney Bickford
Kathleen Border
Michael H. Botros
Marla Cheney
Joseph N. Colasuonno II
Amanda Drake
Kyle William Heassler
Marisa Benzin Strzelec
Catherine G. Sutherland
Natalie Jean Vetter
Jenna R. Warren
Tammie L. Watson
Sandra Lee Winiasz

CLASS OF '16

Samantha A. Bellavia
William J. Boehm
Tracy Lynn Elwood
Zach James Klapp
Felicia Kreuzer
Andrew J Nosek
Kristen Rebecca Petrushesky
Matthew Wendling

CLASS OF '17

Ciera Cammilleri
Devlynn M. Chlebowy
Danielle Anne Kirchner
Rebecca Klein
Justin S. Taylor
Kathryn Marie Vanvalkenburg
Daniel Martin Vyverberg
Jennifer Lynn Wingood

1962 ALUMNAE SCHOLARSHIP FUND

Grace A. Case, '62
Catherine Luby Ceranski '62
Roberta Rozek Evans '62
Elizabeth Seereiter Hogan '62
Astrid Kodric-Brown '62
Patricia Mostyn-Aker '62
Diane Peschio Naples '62
Janice L. Przybylski '62
Sharon Fenlon Watz '62

AAUP SCHOLARSHIP FUND

Patricia Bahn
Craig Tyson
Christine Verni '97, '07, '15
Russell Gullekson
Martin Kelly

ANNE HARRINGTON '43 AND MOIRA DUGGAN ENDOWED SCHOLARSHIP

B. Jean Harrington Duggan '48

ANNIVERSARY CLASS OF 1954 ENDOWED SCHOLARSHIP

Virginia Nowak '54
Sister Jean E. O'Shaunecy GNSH '54

ANNIVERSARY CLASS OF 1957 ENDOWED SCHOLARSHIP

Jan McGarry '57

ANNIVERSARY CLASS OF 1964 ENDOWED SCHOLARSHIP IN MEMORY OF CAROLE DOYLE STRASSHEIM

Linda D. Allen
Anonymous
Lois I. Bernbeck
M. P. Crane
Eileen T. Drinkwater
Marilyn R. Farmer
Nancy C. Findlay
Carol and Carol '64 Montante
Joan O'Neill
Elaine J. Regan

Elizabeth J. Ryan
David Seto
Robert Strassheim
Robert P. Strassheim
Pollyanna Zinck

ANNIVERSARY CLASSES ENDOWED SCHOLARSHIP

Mary Kiefer Beals '66
Alice Blake-Stalker '66
Valerie Thielman Blind '63
Elizabeth Capron Bloom-Dunn '66
Mary Fritzen Bonner '66
Barbara Jean Campagna '63
Rita Colicchia '66
Monica Marzolf Cosgrove '66
Linda Ramich Costello '66
Elsa Haas Durichek '66
Nadine Lennik Fanelli '61
JoAnn Tymorski Hess '66
Elizabeth Malecki Horrigan '66
Amy Catherine Johnson '63
Dorothy Dodman Kelleher '66
Mary Reilly Keysa '66
Helen Schnacky Lindley '63
M. Patricia Kingston O'Hara, '63
Diane Audrey Palmeri '65
Sue Ann Fitzgerald Phillip '66
Janet Marriott Rebhan '63
Grace Rizzo Rissetto '66
Anne Marie Pope Rozek '66
Loretta Harrity Syput '66
Suzanne Woodward Szustakowski '66
Diane Janusz Tardibuono '66
Patricia Skimin Touchette '66
Kathleen Manley Ucci '66
Janet Kroff Wiehle-Amund '66

MARY SCHWEITZER BAUER ENDOWED SCHOLARSHIP

Charles & Mary Bauer Foundation

BCBS HEALTH ANALYTICS SCHOLARSHIP

BlueCross BlueShield of WNY
HealthNow New York Inc.

MICHAEL BIHARI ENDOWED SCHOLARSHIP

Jeanette Swartz

BOGGAN SCHOLARSHIP FUND

Joseph & Marguerite Boggan
Ellen Boggan Murray
Mary Boggan Stephen '63

CARDARELLI FAMILY ENDOWED SCHOLARSHIP

Caesarina Ciminelli Cardarelli '43 †

NATALIE CARLEY AND SISTER VIRGINIA ENDOWED MEMORIAL

Sister Denise A. Roche, GNSH '67

ELIZABETH CONSTANTINE BOLAND ENDOWED SCHOLARSHIP

Walter E. Constantine

CROSSETT PHYSICIAN ASSISTANT STUDENT SCHOLARSHIP

Alison Galie Broadbent '99
Nicole Conroe
Crystal M. Crossett '08
Sandhyaben Parikh

CVS PHARMACY SCHOLARSHIP

CVS Caremark Charitable Trust

DEL SANTO FAMILY COMMUNITY HEALTH NURSING SCHOLARSHIP

Anonymous

DICKMAN IRMA/DRISCOLL SR SHEILA

M. Jane Dickman

SISTER MARY SHEILA DRISCOLL, GNSH SCHOLARSHIP

Cornelius J. Mack
Maureen O'Connell '63

DUGAN FAMILY ENDOWED SCHOLARSHIP

James and Dorothy Higgins
McNicholas '69

FLANIGEN-GRIFFIN ENDOWED SCHOLARSHIP

Margaret R. Wells and John Drexelius
Edith M. Flanigen '50

JOHN GRANDY PHYSICIAN ASSISTANT AWARD

John K. Grandy PA-C, '04

RITA DESPIRT HEFFERMAN ENDOWED SCHOLARSHIP

DeSpirt Foundation, Inc.
Irenaeus Foundation

ELIZABETH C. & L. CARL HIGGINS ENDOWED SCHOLARSHIP

Shelly Rittling

GERALDINE HELFTER HUNTER ENDOWED SCHOLARSHIP

Cristina E. Taylor
Barbara Hunter
John B. Hunter
Lynn Wysochanski Walsh '77
Rosemary Walsh '49

JAMES DEHAVEN SCHOLARSHIP FUND

Jeffery A. '01 & Erin Canale Agan '82
Kathleen A. Anderson
Patricia Bahn
O'Dane Brady '08
Richard E. Dowds
Cristian Gurita
Julia Hall
John Harris
Mary I. Hurley
Thomas Milano
Marion P. Olivieri
D'Youville College Student
Government Association
Sarah G. Tomlinson
Kaitlynn M. Trzaska '12

JOAN HETZELT HANIFIN '53 MEMORIAL SCHOLARSHIP FUND

Thomas J. Hanifin

KELLY - REGER FAMILY ENDOWED SCHOLARSHIP

Robert Reger

KEY PRIVATE BANK COMMUNITY SCHOLARSHIP

KeyBank

KEYBANK NWD ENDOWED SCHOLARSHIP

KeyBank

KATHERINE GORMLEY KOESSLER ENDOWED SCHOLARSHIP

A. Laurie Koessler Brosnahan '85
Katherine Koessler Juhasz
Kenneth L. & Katherine G. Koessler
Family Foundation Inc.
Kenneth and Paula Keenan Koessler '67

LOUISE PINES & MARY RICO ENDOWED SCHOLARSHIP

Dorothy A. Ellis
Eileen T. Hanley-Noworyta
Dennis A. Pines '74

EILEEN CALLAHAN LYONS AND LEO LYONS ENDOWED NURSING SCHOLARSHIP

Richard & Jane Lyons Patterson '76

MARINO SMYTON FAMILY ENDOWED SCHOLARSHIP

James and Patricia Marino Smyton '65

NURSING SCHOLARSHIP

Martha Scott Barnas '77
David J. Bradley
Eileen Brobson Cape '71
H. Thompson Dale & Sandra Kolasz
Dale '73
Mary E. Dillon '72
Mary Ann Repicky Emanuele '67
Virginia Gebus '72
Takao Hattori '13
Ann Flynn Holler NC, USN (Ret.) '70
Angela Sorrento Jada '70
Kathleen Arganbright Koon '65
Dr. Judith Lewis
Dr. Kathleen Mariano
Joyce Kontrabecki Markiewicz '80
Lucy McLaughlin '77
Richard E. Pawlak '82
Roberta Page Pawlak '81
LeeAnn Petronsky
Barbara Schweizer
Karla Simmeth Sherwood '89
Maria Mulderig Stilwell '58
Karen Ziemianski '83
Gloria Solecki Zieziula '69
Helen Bodkin Zuelzer '77

SCHOLARSHIPS

Accord
Andrea Anderson Addison '11
Derek D. Addison '13
Lauren B. Altieri '80

Mark '76 and Charlene McNamara
Barnes '76
Gail Fassel Baumgarten '69
Rosalind Davis Blackshear '89
Lynn A. Brant
Valerie Graser Cashin '77
Kathleen Kane Crowe '69
Dorothy Denny Cumber '55
Elaine Knab Deangelis '63
Mary Denise Mahoney Dunford '94
Carly Duszynski
Megan Lachaal Farrell '82, MD
Dr. Roger Fiedler
Martha Gonter Gaustad PHD '69
Nancy Lopresti Goodrich '60
Kathleen Emerson Groves '80
Peter Gruen '13
Richard Lee '11 & Erin McCarthy
Hanaburgh '11
Terry Herring
Jeff & Johnna Hermann Hyde '90
Shirley Mozdziak Ingram '61
Patricia Maslyn Kohler '71
Jacob Kopera
Monica Cosgrove Lazarus '65
Judith Linde LeFevre '80
Eileen Lewis '68
Michele Woyschner Mach '78
June Galloway McCarthy '59
Cynthia L. McDonald
William P. McKeever
Margaret Mary Meissner '02
Stephen Mercurio '77
Carol A. Milazzo '00
Jacquelyn Gooslin Milbrand '08
Kathleen Moisiewicz '63
Carl and Carol Lyons Montante '64
Chau Nguyen
Marianne Koch O'Brien '80
Eileen O'Brien-Cardona '71
Sandra R. Putnam '69
Barbara Lee Rhee '82
Maureen Crowley Riley '74
Sheila Collins Rosowicz '75
Raul Russi '83
Janice Pritchard Scammell '66
Margaret Schlotterbeck '83
Kathleen M. Slayton Ed.D., '64
Ruth Smith '55
Jeffrey Paul Spors '14
Wendy Davis Swick '94
Maryellen Quinn Thirolf '67
Craig Tyson
Elizabeth Giermata Weiss '64
Sandra Lee Winiasz '15
Judith Fredericks Wisenbaker '77
Patricia Wagner Woods '64
Dolores Franzek Zabrocki '49

PRESIDENTIAL SCHOLARSHIP

The Dillon Presidential Scholarship is the most prestigious scholarship awarded by D'Youville College. It honors the contributions of the Michael F. and Eleaine Dillon family to the college. This esteemed award is given each year to one student chosen for his/her academic achievements, zeal for learning and leadership qualities. The scholarship fund is named for the late Honorable Justice Michael F. Dillon, and his wife, Eleaine Tighe Dillon. Justice Dillon was presiding justice of the appellate division of the New York State Supreme Court from 1979 - 1991 and a member of the D'Youville College Board of Trustees from 1982 - 1991.

ABM Janitorial Services
A-Kleen Windows, Inc.
John Amershadian
Patricia Bahn
Barclay Damon, LLP
Barnes & Noble College Bookstores, Inc.
Paul and Mary Grace Bauer
Bond, Schoeneck and King, PLLC
R. Thomas Burgasser, PLLC
Cara Medical
Catholic Charities of Buffalo
Catholic Health System Inc.
Courier Capital Corporation
Crystal Clear Pools, Inc
Danforth
Deloitte Foundation
Melinda G. Disare, Esq.
Dr. Steven Diver and Jan Vesper-Diver
Andrew Dorn Jr.
D'Youville College
Eaton Office Supply Co. Inc
Elbers Landscape Service, Inc.
Elevator Maintenance of Buffalo, Inc.
Erie County Medical Center
Five Star Bank
Edith M. Flanigen '50
Dr. Peter Forgach
Grey Nuns of the Sacred Heart
Betsey Higgins
Mary Hoffman
Independent Health Association
Katherine Koessler Juhasz
Kelley Bros, LLC.

Drs. M. Ruth Reilly '89 and David Kelly
KeyBank
Kenneth and Paula Keenan Koessler '67
Lawley Insurance
Sr. Jean Marie Liston GNSH
Lumsden, McCormick LLP
Mr. and Mrs. Vincent J. Mancuso
Masiello, Martucci, Calabrese Associates
Herbert Mennen
Mercy Hospital
Edwin A. Mirand, PhD, D. Sc. †
P&A Administrative Services Inc
Carl Paladino
Mr. and Mrs. Richard Penfold
Personal Touch Food Service
Print2Web LLC
Rapid Ray's Printing & Copying
Rich Products Corporation
Roswell Park Cancer Institute
Mr. and Mrs. Joseph E. Ryan
Savoy Contract Furniture
Victoria Saxon
James and Elizabeth Schmit
Allison Schuler
Supermarket Management, Inc.
The McGuire Group
VALIC Financial Advisors, Inc.
Patricia Lyons Van Dyke '52
Vilardo Printing
Wayne D. Wisbaum
WUTV/WNYO

MARIE CLAIRE GUNNING O'LEARY ENDOWED SCHOLARSHIP

Katherine and Wade Lynes
Daniel O'Leary, Jr., Ann, Katie and
Maureen

CHARLENE DANIELLE PAGE ENDOWED SCHOLARSHIP

Salvatore W. Page

VINCENT & HARRIET PALISANO FOUNDATION SCHOLARSHIP

The Vincent & Harriet Palisano
Foundation

JOSEPH PERNA FAMILY ENDOWED SCHOLARSHIP

Philip A. Perna
Supermarket Management, Inc.

PHARMACY ENDOWED SCHOLARSHIP

Sandra Pottynski Gibson '01
Lori Marasco
Gary P. Stoehr

PAUL J. AND MARTH N. REES ENDOWED SCHOLARSHIP

Paul J. and Martha N. Rees Charitable
Trust
Mary Eberl Evans '59

MARY CREHAN ROCHE ENDOWED SCHOLARSHIP

Richard '80 & Philomene Kosmoski
Cudzilo '77
Carol A. Milazzo '00
Eileen Hanley-Noworyta '78, '15
Mary Joan Roche Peek '61
Rev. Kevin T. Peek

RUTH J. SCHWENDLER SCHOLARSHIP FUND

Estate Of Ruth J. Schwendler

SISTER MARY CHARLOTTE BARTON ALUMNI KINSHIP SCHOLARSHIP

Jeannette Ann Lesinski '91
Marie Gordon McCarthy '61
Richard '11 and Erin McCarthy
Hanaburgh '11

M. CAROLINE AND WALTER F. SHANAHAN MEMORIAL SCHOLARSHIP FUND

Jerilyn E. McGivern
Bonne T. Mogulescu

SISTER FRANCIS XAVIER LYNCH GNSH SCHOLARSHIP

Joan Romanowski Bukowski '56
Jeanne F. Lynch
Elizabeth Carraher Whalen '48

THE DOLORES AND JEREMIAH SULLIVAN NURSING SCHOLARSHIP FUND

Darcy Connors
Nora B. Sullivan
Deirdre Sullivan Tomasello '77

THERESA HAWRO ENDOWED SCHOLARSHIP

George and Christina Barth Eberl '67
Pollyanna Radley Zinck '64

NELSON L. TULUMELLO ENDOWED SCHOLARSHIP

Susan Baker-Kroczyński '81
Mary Beth Pfeiffer '84
Dennis A. Pines '74
Eileen Hanley-Noworyta '78, '15

VAN DYKE FAMILY ENDOWED SCHOLARSHIP

Margaret Van Dyke Holmes '52
D'Youville College North Country
Chapter
Mary Ann Perry '74
Susan Gray Gibbs '60

GERTRUDE M. MURPHY WINKELMAN, '34 ENDOWED SCHOLARSHIP

Mary Winkelman Epp '63

CENTER OF MISSION INTEGRATION

Patricia Bahn
Jeanette Baxter
Dr. Gina M. Camodeca
Sister Marita Campbell GNSH '74
Mary Anne Casey '64
Ann P. Caughill '12
Cha Consulting Inc.
Victoria A. Christopher '70
Dr. Kathleen Connor '64
Sr. Mary Brendan Connors GNSH '54
Mary Jane Christine Cryan '65
Ann S. Czaplá '71
Patricia Woods Daigler '64
A. Sharon '67 and Charles Deehan
Dr. Lisa DeMarco
Mary Grace Poorten Demarse '63
John Dicky
Dr. Teresa Donegan
Andrew Dorn Jr.
Sister Mary Kathleen Duggan GNSH '47 †
Roberta Rozek Evans '62
Joseph Fennell
Dr. Maureen F. Finney '97
Dr. Joseph A. Grande
Robert M. Greene
Jane Flanigen Griffin '54 PhD
Magdalene Halasz
Joanne Lodick Haley '66
Eileen Hanley-Noworyta '78, '15
Joan M. Heine '57
Hodgson Russ LLP
Fran Hornung Jr.
Barbara G. Johansen '54
Dr. James Karnes
Mary Elizabeth Kirwan '60
Helena Kittleson
Craig A. Kornacki
Mr. and Mrs. Robert Kresse
Leonardo Da Vinci High School
Dr. Kathleen Mariano
Anna Frawley Martin '58
Kate Glass McDermott-Mahon '65
Elizabeth Byron McGowan '70
Stephen Mercurio '77
Carol A. Milazzo '00
Martha Morales
Linda Bilowus Moretti '81, '09
Dr. Patricia Palumbo
Robert J. Perelli, C.J.M.
Eugene L. Pohancsek '00
Helen Reilly

Grace Rizzo Risetto '66
Dr. Lynn C. Rivers
Martha Rollek Rutowski '57 and
Joseph Rutowski
Florence Schimert-Krieter
Frances Schmidt
Hon. Mary Slisz
Ruth Smith '55
Jeffrey Paul Spors '14
Stieglitz Snyder Architecture
Sister Sheila A. Stone GNSH '69
Bonita Santillo Sturniolo '62
John Sullivan
Jeanette Bihari Swartz
Patricia Skimin Touchette '66
Angelo Travale
Charles J. Urlaub
Patricia Lyons Van Dyke '52
Jacqueline Weigle '88
Geraldine Florek Wiess '63
Wilson Ralph C. Foundation
Susan Larkin Wisniewski '71

IN HONOR

MARY EBERL EVANS '59
Paul J. and Martha N. Rees Charitable
Trust

**EILEEN HANLEY
NOWORYTA '78, '15**
Dennis A. Pines '74

PATRICIA REESE
Katherine and Wade Lynes

**SISTER DENISE A. ROCHE,
GNSH '67**

Jane Anne Bigelow '67
Victoria A. Christopher '70
Walter Constantine
Philomene Kosmoski Cudzilo '77
Richard Cudzilo '80
Jane Flanigen Griffin '54 PhD
Carol A. Milazzo '00
REALM
Hon. Mary Slisz

JOAN NICAISE URBAN '56
JoEllen Urban

PROVIDENCE SOCIETY

Kathleen Hensler Albertson '64
John Amershadian
Anonymous
Catherine Anderson Barone '35 †
Charles A. Bauda, MD †
Charles † and Mary Schweitzer Bauer '47 †
Irene Poupore Beaufait '45
Jane Anne Bigelow '67
Margaret M. Boone '29 †
Helen K. Bowen '54
Leo A. Bradley
Catherine M. Braniecki '73
Winifred Maloney Burke '32 †
Lucia Ragusa Calandra '34 †
Barbara Jean Campagna '63
Patricia Coon Chandler '54 †
Victoria A. Christopher '70
Estate of Rita Ellen Cobb '43 †
Marguerite DiTusa Collesano '64
Marian O'Connell Daly '43 †
Mary Frances Danner '55
Mary George Davitt '52
Mary M. DeLaney '72
Marjorie McGowan Demerly '39 †
M. Jane Dickman
Andrew Dorn Jr.
Katharine M. Doyle '22 †
Mary Staudt Dumas PhD '70
Kathleen F. Dunleavy '71
Mary Lou Ehrne Dunn '47 †
Christina Barth Eberl '67
Susan Goodell Eye '72
Deborah Jarvis Faber '93
Kevin Michael Faber '93
Esther Valvo Fest '59 †
Edith M. Flanigen '50
Thelma E. Fleisch '43 †
Helen M. Fritz '34 †
Marguerite Strauss Gebhard '19 †
Estate of Monica M. Gensbittel '49 †
Lucille Austin Gibbin '49 †
Carol Ruth Glaeser '65
Paul '75 and Catherine Alcorn
Gospodarski '73
Paul Gospodarski '75 †
Dr. Joseph A. Grande
Judith Larouere Green '69
Mary Ellen Story Haggerty '58
Estate of Elizabeth J. Hannan '47 †
Joan K. Helm '52 †
Mary C. Hogan '42 †
Arline Mason Hoyt '43
Geraldine Helfter Hunter '19 †
Maureen Hutchinson '45 †

Pauline Gallagher Kapke '55 †
Dolores Zielinski Kasler '44 †
Mary Esther Kelley '36 †
Catherine M. Keogh '27 †
Mary Duggan Kinsella '26 †
Alfred H. Kirchhofer †
Loretta Morrissey Kirkwood '15 †
Mary Elizabeth Kirwan '60
Katherine Gormley Koessler '29 †
Eleonore Elizabeth Kolodziej '53
Helen M. Kowalski '44 †
Evelyn Kruse '46
Dr. Merrily Ann Kuhn '67
Mr. and Mrs. William Lawley
Edward Lazik
Nancy Mills Loving '42
Eileen Callahan Lyons '42 †
William Joseph Mariani EdD '07 †
Barbara Wozniak Martin '62
Mary McCartin '38 †
Mary Margaret McGuinness '42 †
Helen McManus '27 †
Marilyn Gohr McTaggart †
Jo Ann M. Mecca '59
Edwin A. Mirand, PhD, D. Sc. †
Carl and Carol Lyons Montante '64
Jay Carmody Morley †
C. Jean Morton '58
Brenda P. Murray '60
Susan Krantz Nielsen '80
Robert Nielsen †
Mary Anne Grotto Oberbach '24 †
Bertha Killeen O'Connor '22 †
Mary Dalton Oldham '39 †
Grace Roche O'Mara '29 †
Sarah A. O'Roark †
Angeline Malachowski Pantera '41 †
Marilyn Turner Panzica '57
Roberta A. Patterson '66
Mary Beth Pfeiffer '84
Peter and Marie Poth †
Anne Keefe Raiche '49
Romana Kelly Reger '44 †
Alice Riehle Riley '30 †
Dorothy Zdarsky Rose '41 †
Loretta Schneider '36 †
Joyce Polizzi Seegel '65
Maryanne Shanahan '65
Mary Ann Sharrow '57
Anne Denning Sheehan '30 †
Rebecca Shine '81
Kathleen M. Slayton EdD, '64
Beverly Michalak Slichta-Cusick '66
Ruth Smith '55

Rita Smyth-McDonald '47 †
 Dr. Charles Stein +
 Margaret Hurley Strauss '37 †
 Stella M. Tiffany '18 †
 Rosemary Mustarelli Townley PhD
 '73, LLD
 Marion Peggs Truxes '29 †
 Patricia Klocke Twist '53 †
 Carmela Valente '38 †
 Patricia Lyons Van Dyke '52
 Vivian A. Van Dyke '49 †
 Margaret Mary Wagner '59
 Catherine Dearing Waters '30 †
 Marion Winkler '37 †
 Ann Wood-Kelly '38 †

Kathleen A. Anderson
 Patricia Bahn
 O'Dane R. Brady '08
 D'Youville College Student
 Government Association
 Russell Gullekson
 Dr. Cristian Gurita
 Dr. Julia Hall
 John Harris
 Dr. Mary Eder, '03
 Drs. M. Ruth Reilly '89 and David Kelly
 Thomas Milano '97
 Marion Pace Olivieri '86
 Dr. Richard Dowds and Dr. Sarah
 Tomlinson
 Kaitlynn M. Trzaska '12

DIANE M. DEL SANTO '82
 Richard '82 and Roberta Page Pawlak '81

GRACE DRUAR '39
 Eleanor Banister

JOANNE D. EYEINGTON
 Richard '82 and Roberta Page Pawlak '81

JOANNE E. FUCHS
 Joanne Wall Fuchs '51

JANE MCGEE GATH '68
 Carolyn Wasielewski '68

**LUCRETIA FARGNOLI
 LYONS '61**
 Arlene M. Freitas '61

MARY HOLOHAN MAHANY '48
 Robert M. Mahany

PATRICIA A. MAHONEY '69
 Frank and Zdenke Manuele

MARIE J. MAIDA '62
 Mary Elizabeth Kirwan '60

JULIE M. MARINACCIO '04
 Terry Herring

EDWIN A. MIRAND, PHD, D. SC.
 Dennis A. Pines '74

MICHAEL MURPHY
 Richard '82 and Roberta Page Pawlak '81

MARIE C. O'LEARY
 Daniel O'Leary, Jr., Ann, Katie and
 Maureen

ROBERT P. PAGE
 Richard '82 and Roberta Page Pawlak '81

**SISTER RUTH MARIE
 PENKSA '62**
 Lucille A. Gervase '62

**GEORGE J. AND ANNA T.
 REPICKY**
 Mary Ann Repicky Emanuele '67

ROSETTA T. RICO '70
 Dennis A. Pines '74

**LORETTA PLEWINSKI
 SHEHAN '44**
 Laura Shehan Norwood '75
 Robert Reger, Jr.
 Transitional Services, Inc.

KATHLEEN WEINLE '60
 Christina Yaccarino

Susan Bennett, EdD
 Dr. Kimberly Bernosky-Smith
 Brenda Beutel
 Kelly Biehls '09
 Dr. Kathleen M. Border '15
 Michelle Bork
 Randy Bowen
 Carrie Brittin
 Lacey Bromley
 Barbara Brady Brown '64
 Donna M. Brzycky '96
 Kristina Buran '10
 Dr. Kirsten Butterfoss
 Dr. Gina M. Camodeca
 Dr. Stephen Caprow
 Holly Carpenter
 Andrew F. Case '96
 Ann P. Caughill '12
 Brian Cavanaugh
 Maimoona Chinwala Ph.D.
 Kathleen Christy
 Michael Cimino
 President Lorrie Clemo Ph.D.
 Nicole Conroe
 Colleen Elizabeth Corcoran DPT, '00
 Joanne Cordone
 Sandra Costanza
 Joshua Cozzo '11
 Philomene Kosmoski Cudzilo '77
 Leo Dandes
 Ronald H. Dannecker
 Antwanette Dato '13
 Jeremiah Davie
 Robert James Dean '14
 Dr. Lisa DeMarco
 Jason Den Haese
 Tammy Distefano
 Dr. Teresa Donegan
 Colleen Dowd RN, MSN
 Matthew Doxtad
 John Drescher
 Mary Denise Mahoney Dunford '94
 Dr. Joseph A. Dunn
 Carly Duszynski
 Mark Eckstein
 Sandra B. Englert
 Elizabeth Fallon
 Joseph Fennell
 Heather Sibley Ferro '95
 Dr. Roger Fiedler
 Dr. Maureen F. Finney '97
 Molly Flynn
 Bonnie Fox-Garrity '07 EdD
 Dr. Thomas M. Frank
 Laura Catherine Cipriani Franklin '13
 Patricia B. Frey '70
 Margaret M. Frye
 Dr. Robert J. Gamble
 Adinoyi Garba

IN MEMORY

**PATRICIA CONTI
 ANDREAS '55**
 Lynn and Christopher Arndt
 Community Ministries Of Rockville
 Mary DiPonzio

DONALD F. BAUER
 Richard '82 and Roberta Page Pawlak '81

CECILIA SPANO BREEN '59
 Gary and April Breen
 Jack and Margaret Buckle
 Therese Conlin Clarke '58
 Florence Cufari
 Alan and Susan Espersen
 Phillip and Sharon Hagadorn
 Maryann Jumper
 Mary Kathleen Keane '59
 Jo Ann M. Mecca '59
 Anita Militello
 Joyce Miller-Caggiano
 Margaret Mary Wagner '59
 Carol Wittig

**SISTER VIRGINIA CARLEY
 GNSH**
 Laurie A. Hall '84

MARY SUSAN CARLSON '70
 William G. Barrick

EUGENE C. DAVID
 Lois M. David '54

DR. JAMES DEHAVEN
 3M Community Affairs
 Jeffery '01 and Erin Canale Agen '02

BEQUESTS

Mary Frances Curry '44
 Mary Lou Ehrne Dunn '47
 Estate of Donald MacDavid
 Estate of Elizabeth A. Flood '44
 Margaret M. Martin
 Alice Riehle Riley '30
 Estate Of Ruth J. Schwendler
 Carmela Valente '38

FACULTY & STAFF

Dr. G. John M. Abbarno
 Andrea Anderson Addison '11
 Susan Adrian RN, MS, CPNP
 Dr. Jason Adsit
 Mark Alicea
 Kathleen A. Anderson
 Anne Chmura Anthon '78, '12
 Stephanie Atti '12
 Patricia Bahn
 Barbara Bahnny
 Susan Balling
 Mary Barone
 Pam Bartlo DPT, '07
 Jeanette Baxter
 Rhonda S. Beck
 Dr. Marilyn J. Bell

D'Youville

John R. Garfoot
Dr. Merlene C. Gingham
Margaret Goodman
Laura Casimino Grable '96
Dr. Stephen Grande
Deirdre Green
Mary Sue Gressley
Darlene Grillo
Russell Gullekson
Dr. Cristian Gurita
Magdalene Halasz
Dr. Julia Hall
Matthew Hamilton
Erin McCarthy Hanaburgh '11
Meghan Harmon
John Harris
Amany Hassan
Terry Herring
Dr. Mary Eder, '03
Cynthia Jachlewski
Christopher Jadoch, RPH, JD
Dr. Joseph Jurkowski
Joseph T. Kabacinski CPA
Dr. James Karnes
Dr. Michele '11 and James Karnes
Dr. Martin Kelly
Mary Wilson Kennedy '68
Mary Jane Key '89
Helena Kittleson
John Koford
Jacob Kopera
Tim Korn
Craig A. Kornacki
Edward and Dr. Susan Kowalewski
Leslie C. Krentz '95, '14
Dr. James Lalley
David Lamb
Stacie J. Lampkin
Jeannette Ann Lesinski '91
Dr. Judith Lewis
Kacie Liwosz
Marvyn A. Mahle '11
Rev. Janice Mahle
Canio Marasco '84
Lori Marasco

William Joseph Mariani EdD '07 +
Dr. Kathleen Mariano
Julie M. '04 and Louis Marinaccio
Nathan Marton
Thomas McCarthy
John McClester
William P. McKeever
Thomas Milano '97
Jacquelyn Gooslin Milbrand '08
Dr. Eric R. Miller
Pamela Smith Miller '81
Ryan Miller '05
Abigail Mitchell
Karen Mlodozeniec
Linda M. Mocny
Martha Morales
Lisa Morano
Mary Ellen Moriarty '70
Ericka D. Morley-Soto
Michelle Mounteney '07
Patricia Kasprzyk Mulvey '62
Colin Nekritz
Chau Nguyen
Dr. Patricia Nowakowski
Dr. Amy Nwora
Teresa O'Connor
Marion Pace Olivieri '86
Deborah E. Owens
Karen Panzarella
Aimee Pearson
Robert J. Perelli, C.J.M.
LeeAnn Petronsky
Laryssa Petryshyn
Mary Beth Pfeiffer '84
Sarah P. Pictor DPT, '06
Jeffrey Platt
Jeffrey Podraza
Eugene L. Pohancsek '00
Dr. Lynn Pownall
Bernadette Jordan Pursel '69
Clara Quadra
Elizabeth Quinlan-Bohn
Dr. Lisa Rafalson
Irma I. Ramos
Benjamin L. Randle

Benjamin L. Randle III
Countess Jai Richards, '14
Meg Rittling
Dr. Lynn C. Rivers
Aime Rizzuto '02
Sharon Ross '83, '12
Dr. Linda Russ
Stacy Ruvio
Ronald Santasiero MD
Cheryl L. Saramak '01
Dr. Judith Grace Schiffert, '63
Earl Schunk
Barbara Schweizer
Dr. Arup Sen
Keren Shavit-Buckley '08
Dr. Steven Smith
Delaokura Smith
Dr. Gregory Soja
Anthony Spina
Christina Spink-Formanski
Thomas Stachowiak
Lori Stutzman
Judith T. Szematowicz
April Taulbee
Roozbeh Tavakoli
Dr. John A. Taylor
Dr. Jean Turcott
Craig Tyson
Dr. Theresa A. Vallone '04, '11
Isabelle R. Vecchio
Dominic Ventura
Christine Verni '97, '07, '15
Clara Davie Voorhees
Dr. Todd Walter
Jeffrey Ware DC
Michelle Warner '96
Cleo Newton Watkins '72
Tammie L. Watson, '15
Edward Weidenbach
Dr. Edward Weiss
Megan Whelan
Ronald White DPT, '92 '11
Dr. Stephen E. Williams
Yolanda M. Wood
Shoshanna Zucker PhD

MATCHING GIFT COMPANIES

3M Community Affairs
Bank of America Charitable Foundation
Deloitte Foundation
The Delta Air Lines Foundation
Ernst & Young Foundation
ExxonMobil Foundation
General Electric Foundation
IBM International Foundation Matching
Grants Program
Key Foundation
KPMG Foundation
Merrill Lynch Private Clients Group
Mutual of Omaha Foundation
P&G
Quaker Chemical Foundation
Saint-Gobain Corporation Foundation
Verizon Foundation

FOUNDATIONS

The Alfiero Family Charitable Foundation
America's Warrior Partnership
City of Buffalo
Community Foundation for Greater
Buffalo
James H. Cummings Foundation
CVS Caremark Charitable Trust
DeSpirt Foundation, Inc.
First Niagara Bank Foundation
The Foundation for Jewish
Philanthropies
Foundation of the Roman Catholic
Diocese
Irenaeus Foundation
Kenneth L. & Katherine G. Koessler
Family Foundation Inc.
National Philanthropic Trust
New York State Education Department
John R. Oishei Foundation
The Vincent & Harriet Palisano
Foundation
Wilson Ralph C. Foundation
Paul J. and Martha N. Rees Charitable
Trust
The Shubert Foundation, Inc.

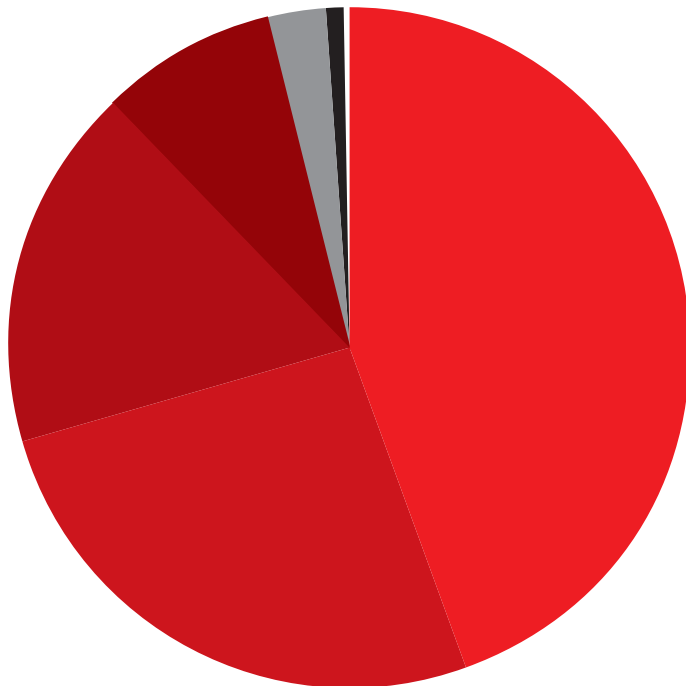
GIFTS-IN-KIND

Marjorie Norris
Lori Stevenson
Foot Levelers

Buffalo Sabres Donation Requests
Panaro's Restaurant
Buffalo Bills
Marco's Restaurant

Rapid Ray's Printing & Copying
Ms. Elenora Heffner
Edward '02 and Dr. Susan Kowalewski

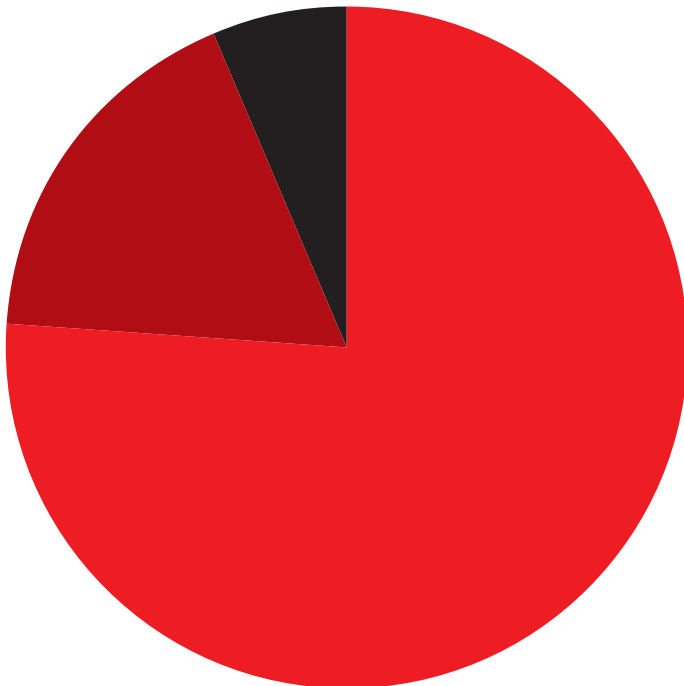
SOURCES OF SOLICITED FUNDS 2016 - 2017



FRIENDS	\$2,335,527.13
CORPORATIONS	\$1,358,669.37
GRANTS	\$905,904.31
ALUMNI	\$435,130.90
TRUSTEES	\$139,745.00
EMPLOYEE	\$43,719.80
STUDENTS	\$9,934.00

TOTAL \$5,228,630.51

PURPOSE OF DONATED FUNDS 2016 - 2017



UNRESTRICTED	\$331,263.83
ENDOWED	\$911,678.67
RESTRICTED	\$3,985,688.01

TOTAL \$5,228,630.51

THE DIFFERENCE MAKER RECURRING DONOR PROGRAM IS A SIMPLE WAY TO GIVE OVER TIME TO NYC.

DIFFERENCE MAKER PROGRAM

☒ **YES! I WOULD LIKE TO BECOME A
DIFFERENCE MAKER DONOR & GIVE MONTHLY.**

Recurring donation amount: \$ _____

☐ Monthly ☐ 1st of the month ☐ 15th of the month

Please continue my recurring gift:

☐ Until I notify you ☐ For one year
☐ Until a donation of \$ _____ is reached. (\$25 min.)

Other ways to give:

☐ Yes, I have included NYC in my/our estate plans
☐ I/we would consider including NYC in my/our estate plans.
 Please send more information.

Account type (choose one):

☐ Checking (attach voided check) ☐ Savings (attach voided deposit slip)

☐ Credit Card:

☐ Visa ☐ MasterCard ☐ AMEX ☐ Discover

Name on card (print) _____

Card # _____

Expiration Date _____ CVV _____

Your signature is required for authorizing automatic payments.
 Please allow 15-30 days for processing before payments begin.

Do you work for a matchmaker?

My/our employer will match this gift.

Company _____

☐ I have enclosed a matching gift form.
☐ I will send the form at a later date.

Visit www.nyc.edu/giving to make a difference today!